

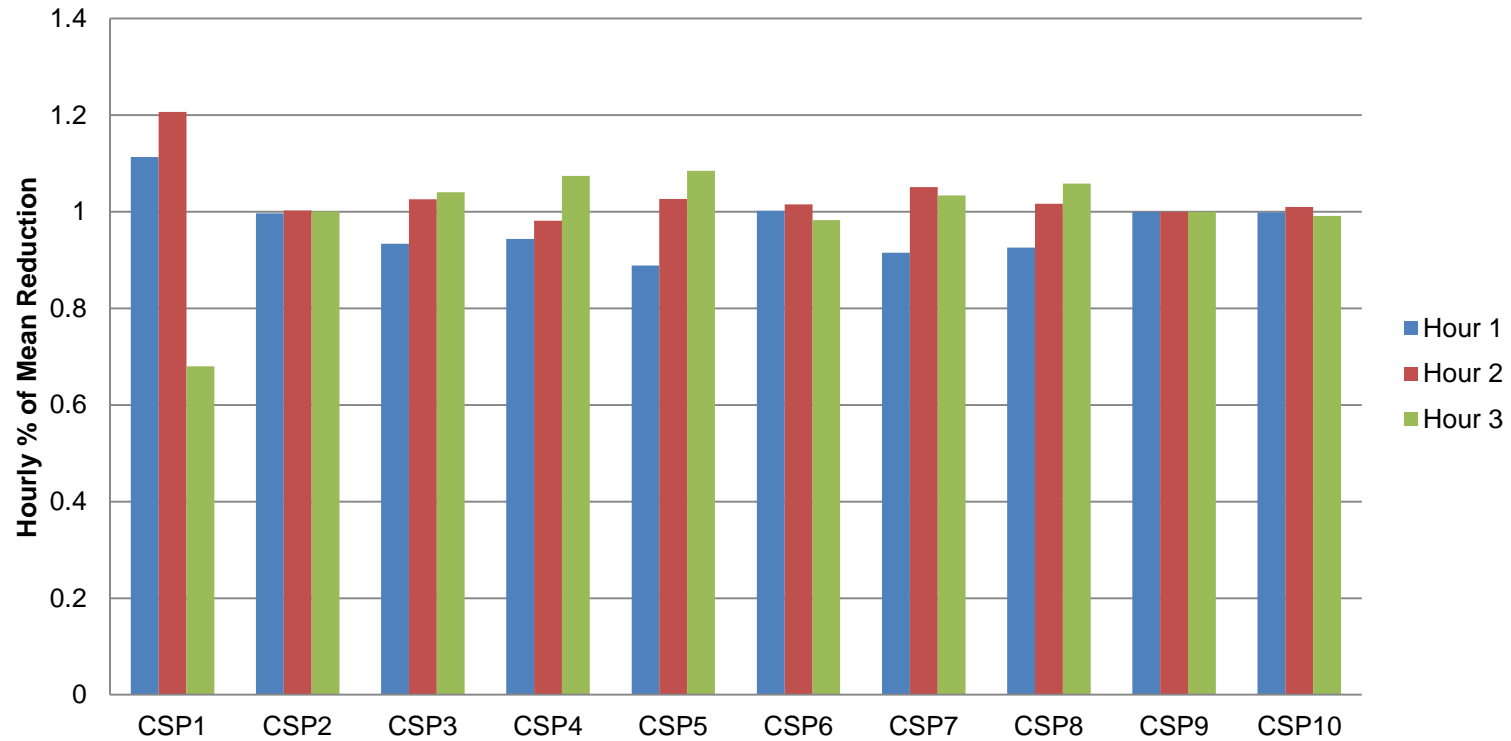
# Follow-up Items for Load Management Testing

Demand Response Subcommittee  
May 28, 2019

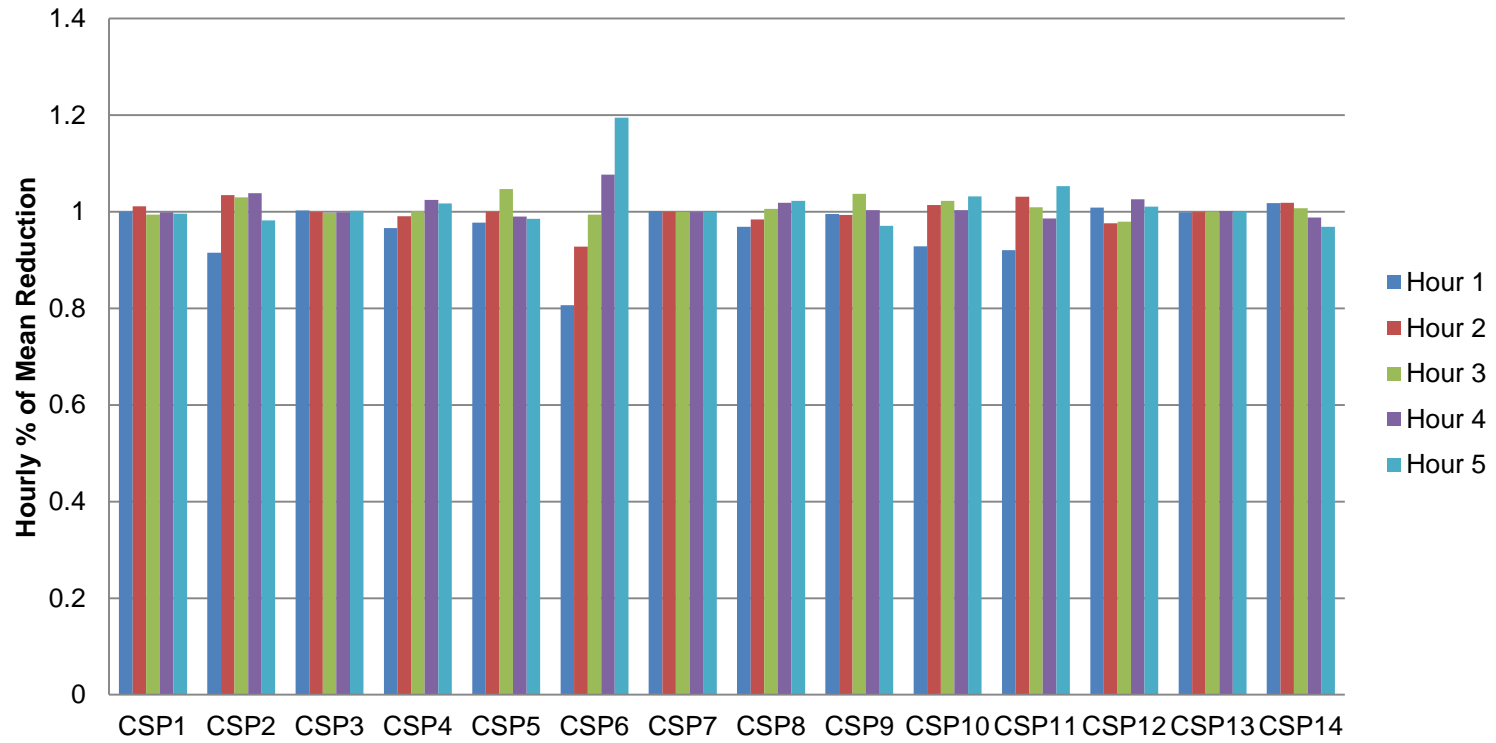
# Hourly Reduction Analysis – Past LM Events

- **CSP level hourly reduction analysis of several past LM events**
- **Displaying normalized hourly reduction values for each hour of the event**
  - **Where average reduction was at least 1 MW**
- **September 11, 2013**
- **July 18, 2013**

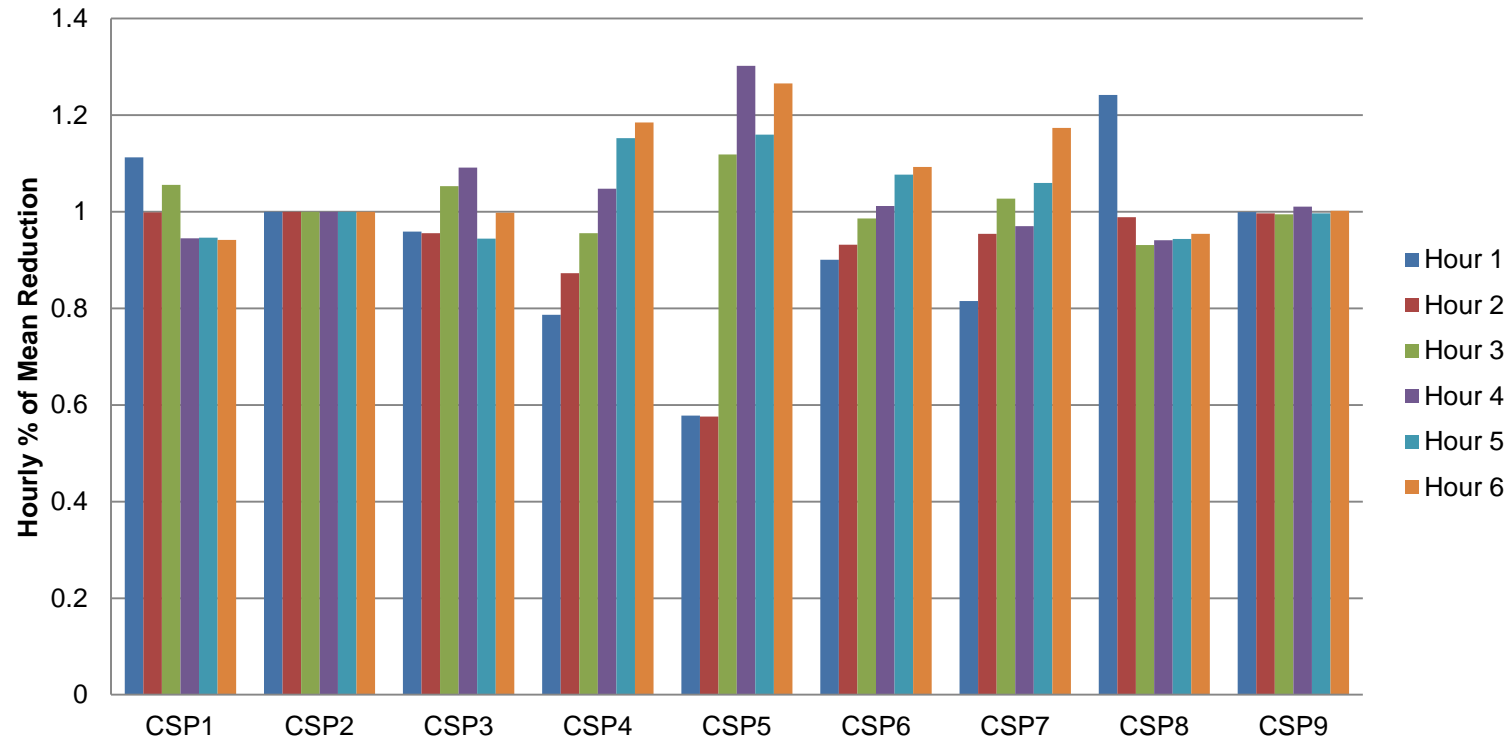
### 13SEP2013 BGE



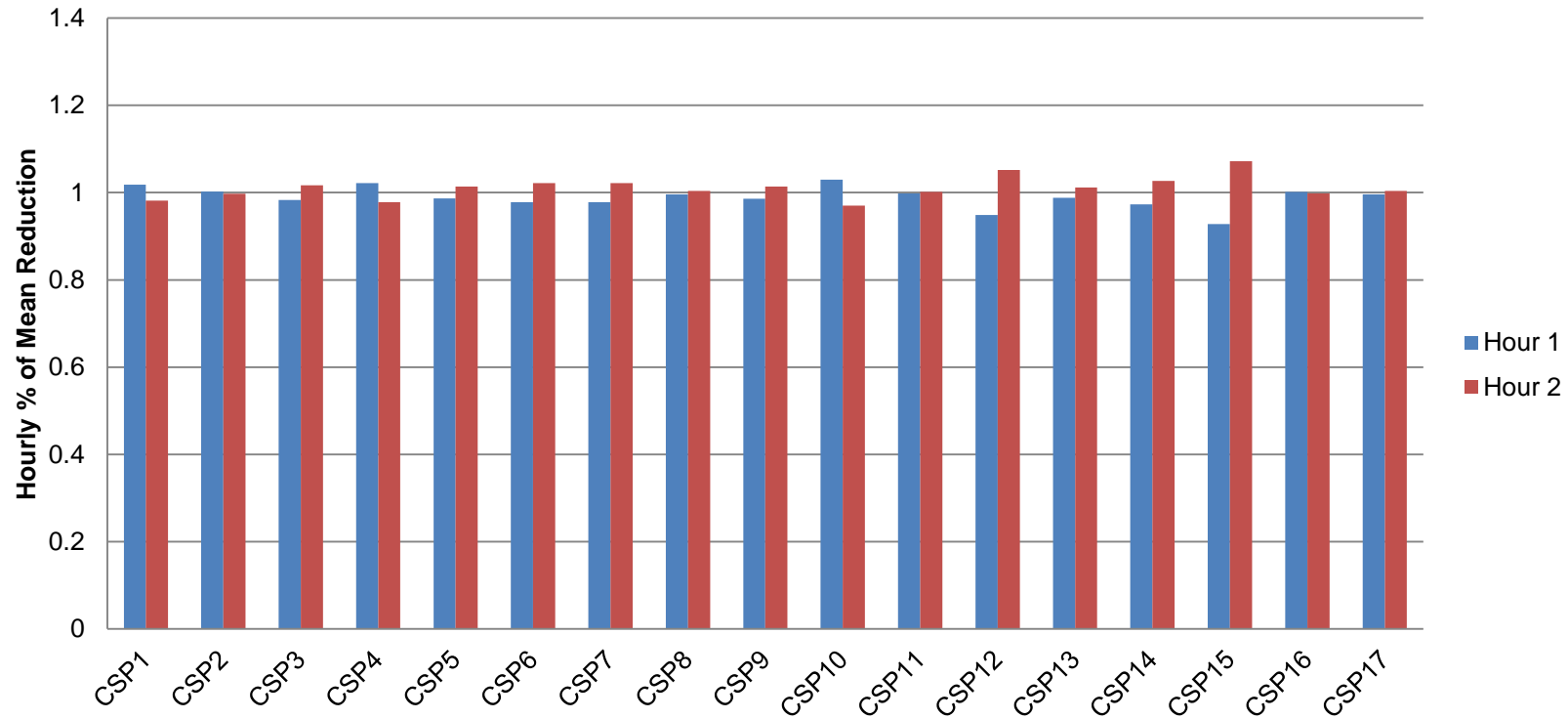
### 13SEP2013 AEP



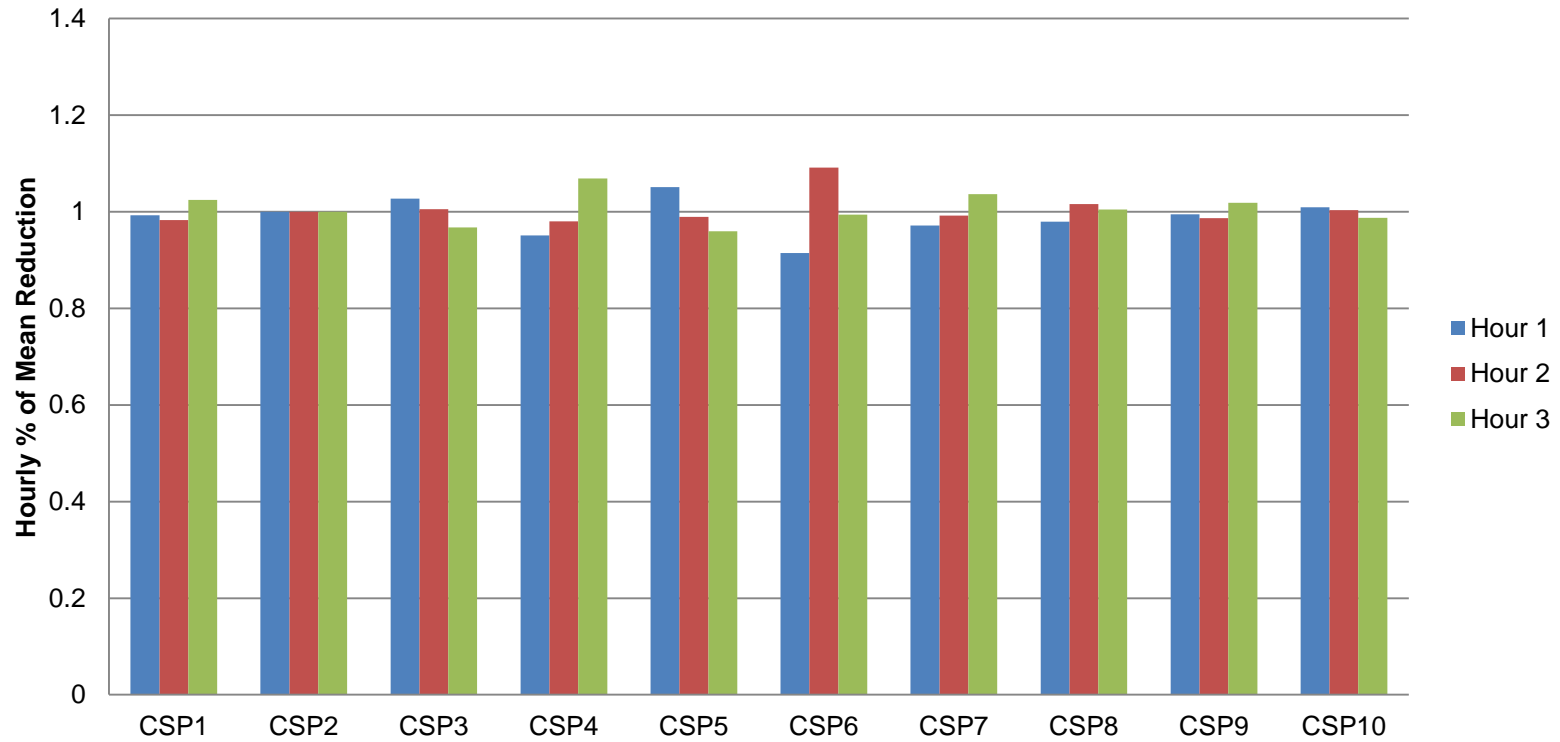
### 13SEP2013 ATSI



### 18JUL2013 PPL

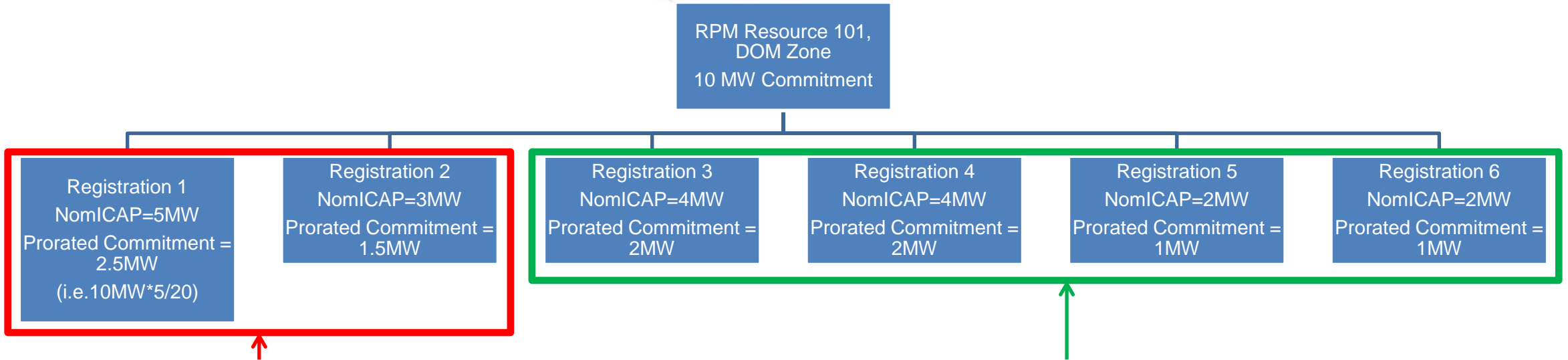


### 18JUL2013 ATSI





# Test Commitment after Subzone Event



These two are in the DOM\_CHES Subzone and where called on for a SZ event. Commitment for event is 4 MW. No subject to test.

These four are not in the DOM\_CHES subzone, where not called for an LM event and are required to test. Commitment for test is 6 MW.

- Apply existing rules - Use CBL assigned to Load Management registration
  - use default CBL (3 daytype, high 4 of 5 with SAA) unless approved for alternative CBL or have existing Economic Registration (then use Economic CBL)
- Apply existing settlement rules but do not pay make whole payment for offer price and shutdown cost
  - $(\text{CBL} - \text{Load}) * \text{Line Loss Factor} * \text{LMP}$
  - $(1 - 0.5) * 1.1 = .55 \text{ MW} * \$100 = \$55$
- Allocate cost based on existing Economic DR rules
  - Market Participant with real-time exports
    - ratio-share basis based on their real-time exports
  - LSEs
    - ratio-share basis based on their real-time loads in the zone