

# eDART August 2020 Enhancements

eDART Forum Meeting  
05/06/2020

- General Discussion Topics
- August 2020 Enhancements
  - General Enhancements
  - Generation Related Enhancements
  - Transmission Related Enhancements
- Question and Answer Resolution

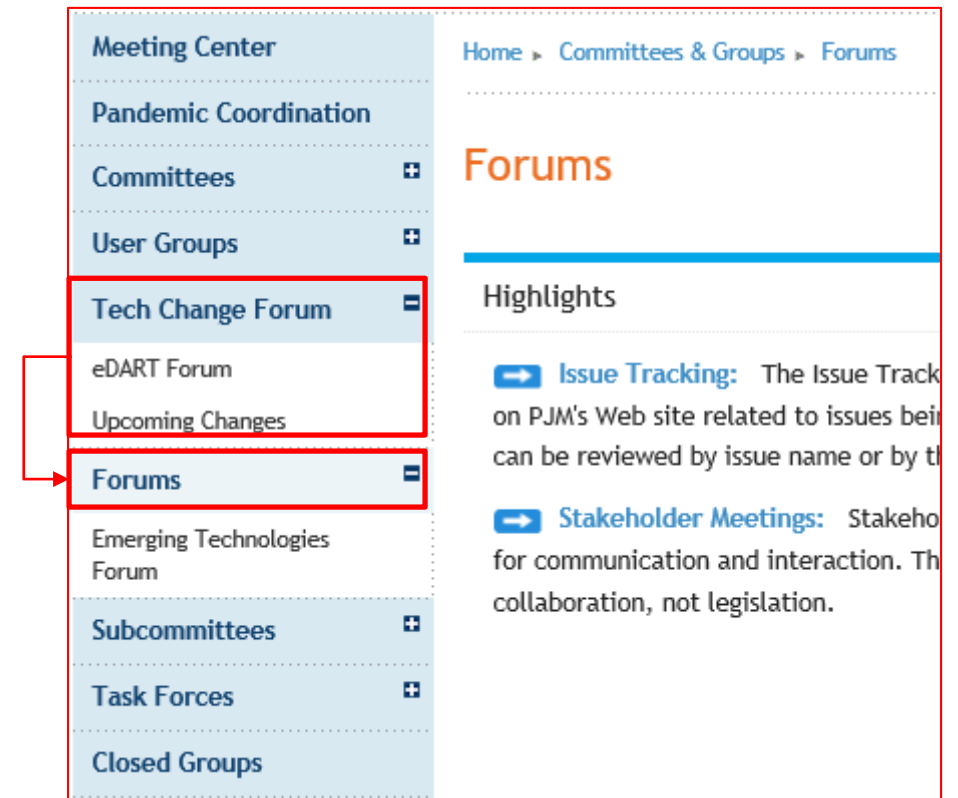
# General Discussion Topics

A new Forums page has been created on [pjm.com](https://www.pjm.com/committees-and-groups/forums.aspx) at <https://www.pjm.com/committees-and-groups/forums.aspx> or

Home > Committees & Groups > Forums

Tech Change Forum and eDART Forum will be moved to be under the Forum page on July 16<sup>th</sup>.

A re-direct message will be added to old pages for users who have them bookmarked.



## Browserless

- Phase 1: PJMCLI Integration
- Phase 2: New browserless functionality (Q1 & Q2 2021)
  - Refreshed endpoints and new functionality will be delivered incrementally
- Parallel Production/Training (Nov 2020 thru Q4 2021)
- Production “Go-Live” (Q4 2021)
  - Retire filetransfer jar file

With the eDART refresh, management of eDART accounts will be migrated to Account Manager.

In preparation for that:

- Use Account Manager User ID for new eDART account requests.
- Update email addresses for existing accounts.
- Clean up dormant and invalid accounts.

# August 2020 Enhancements

## General Enhancements

Production release of August enhancements scheduled for Wednesday, August 12th.

- eDART unavailability will be announced at least 3 business days prior.

Sandbox/Training release scheduled for Monday, July 20th.



The linesout (<https://edart.pjm.com/reports/linesout.txt>) and linesout\_new ([https://edart.pjm.com/reports/linesout\\_new.txt](https://edart.pjm.com/reports/linesout_new.txt)) files were designed to be easily read by users but it has been observed that several users are now using programs to scrape the data from the files.

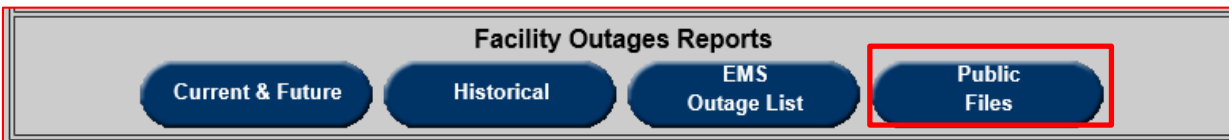
The information in the files is available via XML downloads in eDART (emsoutage/ems\_outage and toimwg) and anyone with an automated download process should utilize the eDART XML download option.

## August 2020 Updates:

- Attempts to download the linesout and linesout\_new files will be throttled.
- Throttling being extended to all external eDART files
  - Files are available when new data is available or after throttle time; whichever is sooner.

File	Update Frequency	Throttle time (minutes)
<a href="#">Voltage Limits</a>	Daily	30
<a href="#">Equipment List/Complete Descriptions</a>	Quarterly	30
<a href="#">Linesout</a>	5 minutes	5
<a href="#">Linesout_new</a>	5 minutes	5
<a href="#">Ratings</a>	Twice a Day	30
<a href="#">Temporary Ratings</a>	Twice a Day	30
<a href="#">NERC Alert Ratings Changes</a>	Twice a Day	30
<a href="#">TERM Reasons List</a>	Daily	30
<a href="#">RTEP Tickets</a>	5 minutes	5
<a href="#">NERC Alert Linesout</a>	Daily	30

- External files will also be available via the Transmission Tickets Menu in eDART.
  - Option to select which files to download.
  - Zip file will be downloaded with selected files.



Public Files			
Include	File	Description	Timestamp
<input type="checkbox"/>	equiplist.csv	Equipment List/Complete Descriptions file	05/12/2020 20:52:34
<input type="checkbox"/>	linesout.txt	Transmission Facilities Outages List	07/09/2020 14:17:00
<input type="checkbox"/>	linesout_new.txt	Staging version of Transmission Facilities Outages List	07/09/2020 14:17:00
<input type="checkbox"/>	nercalertlinesout.txt	NERC Alert Transmission Outages	07/09/2020 17:00:00
<input type="checkbox"/>	nercratingsalertchanges.txt	Ratings changes due to NERC Alert	07/09/2020 17:00:00
<input type="checkbox"/>	pjm_line_ratings.txt	Current ratings for all reportable facilities in PJM	07/09/2020 17:00:00
<input type="checkbox"/>	pjm_temp_line_ratings.txt	Active temporary changes and future changes to ratings	07/09/2020 17:00:00
<input type="checkbox"/>	pjm_term_reason_list.txt	List of the available reasons for ratings change	07/09/2020 11:41:04
<input type="checkbox"/>	rtep.txt	List of RTEP Transmission Outage Tickets	03/04/2020 18:05:38
<input type="checkbox"/>	voltageimits.csv	PJM RTO and TO Voltage Limits	07/09/2020 04:05:01

Download Refresh Main Menu

Changes to Current Facility Outages section of linesout and linesout\_new to better reflect the information contained therein – equipment reported as out-of-service on the PJM system.

- CURRENT FACILITY OUTAGES renamed to DE-ENERGIZED EQUIPMENT
- Normally Open equipment will be labeled as such (N.O.), and on the list when they are OPEN
- Retired Normally Open equipment will remain labeled as Retired.
- File description on [PJM.com](https://www.pjm.com) will also be updated.

## Before

TIMESTAMP:03-04-2020 13:04:35

The data has been provided to PJM Interconnection, L.L.C. (PJM) by Transmission status of scheduled outage requests. However, PJM hereby advises that the information contained therein is for informational purposes only. You are also advised that PJM may update or otherwise change the assessment status List from time to time. By accessing this information, you and the company you represent are using the information contained therein at your/the company's own risk. Accordingly, you and the company you represent agree to hold PJM, its successors and assigns, agents, contractors, service providers or vendors harmless for their use of the data in the Transmission Facilities Outage List, and neither PJM nor its successors and assigns, agents, contractors, service providers or vendors shall be liable for any damages, including but not limited to, direct, indirect, special, incidental or consequential damages, by you/your company as relates to the use of the referenced information obtained from this system.

CURRENT FACILITY OUTAGES						
ITEM	TICKET	FACILITY NAME				
1	0 BRKR	AXTONAEP 765 KV	AXTONAEP R	CB		
2	0 CAP	AXTONAEP 765 KV	AXTONAEP RXAA	REACTOR		
3	0 CAP	AXTONAEP 765 KV	AXTONAEP RXAB	REACTOR		
4	0 CAP	AXTONAEP 765 KV	AXTONAEP RXAC	REACTOR		
5	0 BRKR	CLOVERD2 765 KV	CLOVERD2 DD	CB		
6	0 BRKR	CLOVERD2 765 KV	CLOVERD2 DD2	CB		
7	0 BRKR	CLOVERD2 765 KV	CLOVERD2 RAA2	CB		
8	0 CAP	CLOVERD2 765 KV	CLOVERD2 RXOD	REACTOR		
9	0 CAP	CLOVERD2 765 KV	CLOVERD2 RXOE	REACTOR		
10	0 CAP	CLOVERD2 765 KV	CLOVERD2 RXOF	REACTOR		
11	0 XFMR	CLOVERD2 765 KV	CLOVERD2 T17	XFORMER		
12	0 XFMR	DUMONT2 765 KV	DUMONT2 1-P	XFMR - RETIRED		

## After

TIMESTAMP:07-09-2020 10:17:00

The data has been provided to PJM Interconnection, L.L.C. (PJM) by Transmission status of scheduled outage requests. However, PJM hereby advises that the information contained therein is for informational purposes only. You are also advised that PJM may update or otherwise change the assessment status List from time to time. By accessing this information, you and the company you represent are using the information contained therein at your/the company's own risk. Accordingly, you and the company you represent agree to hold PJM, its successors and assigns, agents, contractors, service providers or vendors harmless for their use of the data in the Transmission Facilities Outage List, and neither PJM nor its successors and assigns, agents, contractors, service providers or vendors shall be liable for any damages, including but not limited to, direct, indirect, special, incidental or consequential damages, by you/your company as relates to the use of the referenced information obtained from this system.

DE-ENERGIZED EQUIPMENT						
ITEM	TICKET	FACILITY NAME				
1	0 BRKR	AXTONAEP 765 KV	AXTONAEP R	CB - N.O.		
2	0 CAP	AXTONAEP 765 KV	AXTONAEP RXAA	REACTOR		
3	0 CAP	AXTONAEP 765 KV	AXTONAEP RXAB	REACTOR		
4	0 CAP	AXTONAEP 765 KV	AXTONAEP RXAC	REACTOR		
5	0 BRKR	CLOVERD2 765 KV	CLOVERD2 DD	CB		
6	0 BRKR	CLOVERD2 765 KV	CLOVERD2 DD2	CB		
7	0 BRKR	CLOVERD2 765 KV	CLOVERD2 RAA2	CB		
8	0 CAP	CLOVERD2 765 KV	CLOVERD2 RXOD	REACTOR		
9	0 CAP	CLOVERD2 765 KV	CLOVERD2 RXOE	REACTOR		
10	0 CAP	CLOVERD2 765 KV	CLOVERD2 RXOF	REACTOR		
11	0 XFMR	CLOVERD2 765 KV	CLOVERD2 T17	XFORMER		
12	0 XFMR	DUMONT2 765 KV	DUMONT2 1-P	XFMR - RETIRED		



Additional date columns to be included in the CSV export:

- Submitted
- PJM Review
- GO Acknowledgement
- Active (for Active schedules only)

Email notification to be sent to Transmission Owner when Voltage Schedules tickets are GO Acknowledged.

Email notification to be sent to Transmission and Generation Owners when Voltage Schedules tickets become Active.

# August 2020 Enhancements

Generation Related Enhancements

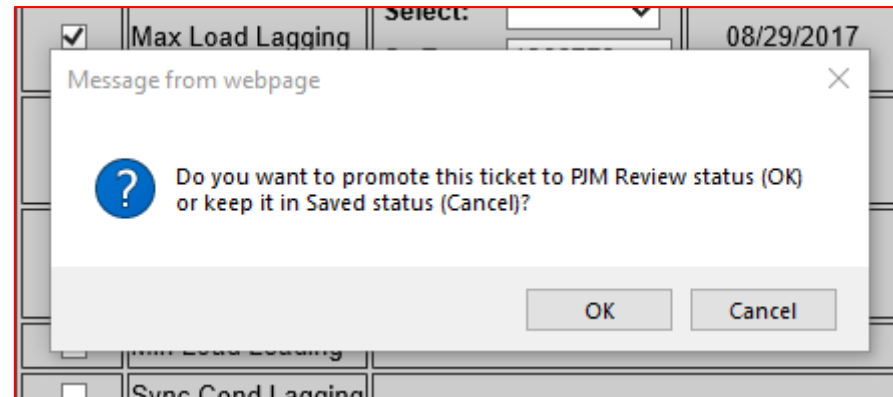


## On the Reactive Results tickets:

- Issues, Additional Comments and Retest columns kept blank if there are no Issues selected by PJM.
- Only Issues selected by PJM are displayed.

		GO Data					PJM Analysis				
Editable	Test Type	MVAR Test Ticket	MVAR Test Date	Test Data	Test Entry Date	Additional Files	Result vs. D-Curve	Issues	Additional Comments	Retest	Analysis Files
No	Max Load Lagging	1360985	11/16/2018	<a href="#">View Data</a>	11/28/2018	<a href="#">Files (1)</a>	Within +/- 5%	Telemetry Discrepancy Model Mismatch		No	<a href="#">Files (1)</a>
No	Max Load Leading	1360985	11/16/2018	<a href="#">View Data</a>	11/28/2018	<a href="#">Files (0)</a>	Shortage	Start Time Mismatch		No	<a href="#">Files (1)</a>
No	Min Load Lagging	1360985	11/16/2018	<a href="#">View Data</a>	11/28/2018	<a href="#">Files (0)</a>	Shortage				<a href="#">Files (1)</a>
No	Min Load Leading	1360985	11/16/2018	<a href="#">View Data</a>	11/28/2018	<a href="#">Files (0)</a>	Shortage				<a href="#">Files (1)</a>

- Additional logic being added to tickets in Saved status.
  - If user is trying to Save a ticket that can be updated to PJM Review status (i.e. all test data has been entered), eDART will display a message with the option to update the status or keep it as Saved.



- ‘Do you agree with PJM Analysis?’ to be changed to ‘Do you agree with PJM recommendation?’
- ‘GO Comments on PJM Analysis:’ to be changed to ‘If No, you must enter comments:’ for clarity.
  - Validation and accompanying error message will be added to ensure that comments are entered if 'No' is selected.

No	Min Load Lagging	1360985	11/16/2018	<a href="#">View Data</a>	11/28/2018	<a href="#">Files (0)</a>	Shortage				<a href="#">Files (1)</a>
No	Min Load Leading	1360985	11/16/2018	<a href="#">View Data</a>	11/28/2018	<a href="#">Files (0)</a>	Shortage				<a href="#">Files (1)</a>

**Do you agree with PJM recommendation?** **No** **If No, please enter comments**

Not entirely, however, the D-curve has been updated. The Shortage at Min Load Lagging was a limit due to the actual Transmission System Voltage High Alarm near 360kV. The Shortages during the leading tests were based on adjusted limits provided, which were 12kV below the assigned Voltage

**Next Action:**

Submit New Default D-Curve: ☒ MVAR Ticket ID: [1387390 View](#)

Retest: ☐

No Change: ☐

PJM review: ☐

## Enhancements to View/Revise and Tickets History filters:

- Unit Name wildcard search field to be added.
- Filter selections to persist when user returns to filter from report.
- Date field labels to be changed to mm/dd/yyyy to match calendar input.

Generator Ticket Selection Form					
Company: <a href="#">Indiana Dunes Co. LLC</a>		Include Historical: <input type="checkbox"/>			
Ticket Type <input type="text"/>		Ticket ID <input type="text"/>		Comp. Ticket ID <input type="text"/>	
Outage Type N/A (Reactive Tickets) ▲ Planned Unplanned Maintenance Forecasted Planned ▼		Unit Type <input type="text"/>		Unit Name (Select / Search) <input type="text"/>	
Cause <input type="text"/>		Reduction Equal to <input type="text"/>		Installed Capacity Equal to <input type="text"/>	
Submission Date (mm/dd/yyyy) From: <input type="text"/> To: <input type="text"/>		Ticket Status <input type="text"/>		Revision Status <input type="text"/>	
Actual Start Date (mm/dd/yyyy) From: <input type="text"/> To: <input type="text"/>		Est. Start Date (mm/dd/yyyy) From: <input type="text"/> To: <input type="text"/>		Est. End Date (mm/dd/yyyy) From: <input type="text"/> To: <input type="text"/>	
Actual End Date (mm/dd/yyyy) From: <input type="text"/> To: <input type="text"/>		Occuring During (mm/dd/yyyy) From: <input type="text"/> To: <input type="text"/>			
<input type="button" value="Apply Filter"/> <input type="button" value="Main Menu"/>					

Currently, retired units are excluded from the Unit Group display but still considered for the assigned vs. unassigned units check

## Enhancements:

- Retired units will be displayed on the Unit Group forms and highlighted.
- Note will be added to Unit Groups report for groups with retired units.

Read Only users will be displayed in Assignment reports.

## CDW Unit Group Edit

Company: [Company Name]

Name:

Note: 

Nuclear units

Group ID: 1

Enter Unit Group Name and Note (description of group)

Click Save Group

Select Units to be added to Group

Roles: [Nuclear Plant Engineers](#)

**Group Units (11)**

Delete	Unit ID	Commercial Name	Unit Type	Installed Capacity	Effective Date	Terminate Date
	<a href="#">New</a>	<div style="border: 1px solid #ccc; padding: 2px;">[Select Name]</div>				
<input type="checkbox"/>	<a href="#">[Unit ID]</a>	<a href="#">[Commercial Name]</a>	Pressurized Water Reactor	1136 MW	08/25/2003	
<input type="checkbox"/>	<a href="#">[Unit ID]</a>	<a href="#">[Commercial Name]</a>	Solar	5 MW		06/15/2020
<input type="checkbox"/>	<a href="#">[Unit ID]</a>	<a href="#">[Commercial Name]</a>	Nuclear	902 MW	04/21/2013	
<input type="checkbox"/>	<a href="#">[Unit ID]</a>	<a href="#">[Commercial Name]</a>	Nuclear	1285 MW	06/01/2012	
<input type="checkbox"/>	<a href="#">[Unit ID]</a>	<a href="#">[Commercial Name]</a>	Nuclear	681 MW	06/01/2012	
<input type="checkbox"/>	<a href="#">[Unit ID]</a>	<a href="#">[Commercial Name]</a>	Nuclear	683 MW	11/17/2010	

Save Group

Refresh

Help

Back to Groups

# August 2020 Enhancements

Transmission Related  
Enhancements



There are cut-in tasks that if not completed, can hold up the energization of cut-in equipment.

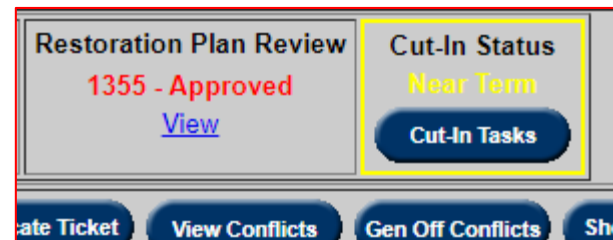
e.g. Monitored Priority, Ratings, Contingency, Connectivity, SE Override, Telemetry

There is limited TO visibility to current statuses of the cut-in tasks.



## New Cut-In Task button on Transmission Tickets

- Only available if ticket is a cut-in ticket
- Cut-In Status will be displayed above the button in colored text
  - Green if Complete
  - Yellow if Near Term
  - Blue if Sufficient
  - Red if Not Ready
  - Black if N/A (historical tickets) or Unreviewed
- Cut-In Status Report information will also be added to the transmission ticket download via XML



Cut-In Task Status	
Title:	XXXXXXXXXXXX
Status:	Near Term
Task	Task Status
Monitored Priority	Complete
Rating	Complete
Contingency	Complete
Connectivity	Complete
SE Override	Complete
Telemetry	Near Term
Tie Line Checklist	Complete
Close Window	

New report of Cut-In tickets and their status information to be available via web UI and XML.

Transmission Reports

Status Report
Trans. Outage Tickets Report
Tickets Active Tomorrow
Cut-In Tickets

Submitted: 63 / 0   Revised: 0 / 0   Received: 5 / 0   Cut-In Today: 10 / 11   Cut-In Near Future: 10 / 11  
Approved: 311 / 2   Active: 42 / 2   Incomplete: 36

Cut-In Tickets Report									
Company: <a href="#">American Electric Power Company Inc. Transmission</a> Not Ready: <input type="radio"/> Ready: <input type="radio"/> Both: <input checked="" type="radio"/> From: 05/05/2020 x To: 05/12/2020   Tickets Only: <input checked="" type="radio"/> Notification Only: <input type="radio"/>									
<span>Apply Filter</span> <span>Main Menu</span>									
Ticket ID	Ticket Status	Start Date	End Date	On Time	Congestion Expected	Station	Cut-In Title	Cut-In Status	Incomplete Cut-In Tasks
<a href="#">787264</a>	Active	01/20/2020 00:30	03/03/2020 16:00	No	No	COLEMAN	Remove Illinois tap (near Colebrook)	Sufficient	
<a href="#">787082</a>	Active	10/29/2019 08:00	03/03/2020 16:00	No	Yes	COLEMAN	Remove tap to connect to Illinois	Complete	
<a href="#">846544</a>	Active	01/06/2020 08:00	03/05/2020 16:00	No	No	INDY TAP	Connect to Illinois	Sufficient	
<a href="#">809059</a>	Active	01/06/2020 08:00	03/06/2020 16:00	No	No	INDY TAP	Remove tap to connect to Illinois	Not Ready	Connectivity; Contingency; Monitored Priority; Rating; SE Override; Telemetry; Tie Line Checklist
<a href="#">838753</a>	Received	03/16/2020 08:00	03/16/2020 16:00	Yes	No	INDY TAP	Remove tap to connect to Illinois	Not Ready	Contingency; Monitored Priority; Rating; SE Override; Telemetry; Tie Line Checklist
<a href="#">787272</a>	Received	03/05/2020 07:00	03/18/2020 16:00	Yes	No	COLEMAN	Remove tap to connect to Illinois	Not Ready	Contingency; Monitored Priority; Rating; SE Override; Telemetry; Tie Line Checklist
<a href="#">853790</a>	Received	03/17/2020 08:00	03/19/2020 16:00	No	No	INDY TAP	Unreviewed	Unreviewed	

Equipment for switching (takeout/restore) are usually out for a short duration at the beginning or the end of an outage ticket.

Currently, TOs are either

- noting these in the description of work,
- adding the equipment to the ticket with staggered dates or
- adding the equipment to the ticket for the duration of the outage.

New eDART functionality to clearly identify the equipment for takeout and/or restore only.

New Equipment Status available to identify equipment for takeout and/or restore only:

- Takeout Only
- Takeout & Restore
- Restore Only

These will also be available via XML for transmission ticket upload and downloads.

Equipment outage dates will be set behind the scenes and fed to downstream processes (SDX, outage reports, etc.)

## Business Rules

- Takeout/Restore equipment cannot be the primary equipment.
- Normally Open equipment cannot be used as Takeout/Restore equipment.
- Ticket cannot have only Takeout/Restore equipment.
- Takeout/Restore equipment can also be listed as outaged equipment but not for start day (takeout) or end day (restore).
  - If user wants to have Takeout/Restore equipment out for the start or end day, list it as regular outaged equipment.

Equipment will be displayed in sections as appropriate.

Tier 2 ☐ Tier 3
 Generate
Add Equipment

Station Equip.

Submit Form

Refresh

Gen. Outage Lookup

Comments Log

NERC-TADS Reports

Projects

Files

Main

Default Status Change Only	Primary	Status	Include	Type	Station Name	Voltage	Equipment Name	Start Date	Start Hour	End Date	End Hour	Resulting Default Status
Takeout/Restore Equipment												
		Takeout Only ▾	Yes ▾	BRKR	<a href="#">CHESTER</a>	69 KV	CHESTER 535 CB					
		Takeout & Restore ▾	Yes ▾	BRKR	<a href="#">BLUEBALL</a>	69 KV	BLUEBALL 135 CB					
		Restore Only ▾	Yes ▾	BRKR	<a href="#">BLUEBALL</a>	69 KV	BLUEBALL 145 CB					
Outaged Equipment												
No ▾	<input checked="" type="radio"/>	Open ▾	Yes ▾	BRKR	<a href="#">AURORA</a>	230 KV	AURORA GNVL_NBRN_2 CB	04/19/2051	07:00	04/19/2051	17:30	No Change ▾
No ▾	<input type="radio"/>	Open ▾	Yes ▾	LINE	<a href="#">BLUE TAP</a>	69 KV	BLUE TAP-CHESTER 6653	04/19/2051	07:00	04/19/2051	17:30	No Change ▾
Default Status Changes Only												
Yes ▾			Yes ▾	BRKR	<a href="#">BLUEBALL</a>	69 KV	BLUEBALL 45 CB					No Change ▾



## Current State

- SVCs (equipment type = GEN) must be in a separate transmission ticket.
- Other equipment out as part of the SVC job must be in a separate transmission ticket; including the SVC breaker.

eDART enhancement to allow users to create transmission tickets with mixture of SVCs and non-SVCs.

- SVC can be O (open) if out of service or C (closed) if in service.
  - Min and Max MVAR values not required.
- SVC can be used for takeout and restore.

New Equipment Status will be available to identify if ticket is for a reduction in SVC output: Reactive.

- Min and Max MVAR values required.
  - Min Var changed to Min MVAR
  - Max Var changed to Max MVAR



Takeout and Restore Equipment												
		Status	Include	Type	Station Name	Voltage	Equipment Name					
		Takeout Only ▾	Yes ▾	BRKR		765 KV						
		Takeout & Restore ▾	Yes ▾	BRKR		765 KV						
		Takeout & Restore ▾	Yes ▾	BRKR		765 KV						
		Restore Only ▾	Yes ▾	BRKR		765 KV						

Reactive Equipment										
		Status	Include	Type	Station Name	Voltage	Equipment Name	Min MVAR	Max MVAR	
		Reactive ▾	Yes ▾	GEN		765 KV				

Outaged Equipment												
Default Status Change Only	Primary	Status	Include	Type	Station Name	Voltage	Equipment Name	Start Date	Start Hour	End Date	End Hour	Resulting Default Status
No ▾	<input type="radio"/>	Open ▾	Yes ▾	LINE		765 KV		05/15/2020	11:00	05/22/2020	11:00	No Change ▾
No ▾	<input type="radio"/>	Open ▾	Yes ▾	BRKR		765 KV		05/15/2020	11:00	05/22/2020	11:00	No Change ▾
No ▾	<input type="radio"/>	Open ▾	Yes ▾	BRKR		765 KV		05/15/2020	11:00	05/22/2020	11:00	No Change ▾
No ▾	<input type="radio"/>	Open ▾	Yes ▾	BRKR		765 KV		05/15/2020	11:00	05/22/2020	11:00	No Change ▾

Default Status Changes Only												
Default Status Change Only			Include	Type	Station Name	Voltage	Equipment Name					Resulting Default Status
Yes ▾			Yes ▾	BRKR		765 KV						Open ▾
Yes ▾			Yes ▾	BRKR		765 KV						Open ▾

## Current State

- No validations in place to align with the outage types.
  - e.g. Daily – Weekends Only ticket that are not scheduled for a weekend.
- Results in misalignment of outage dates downstream of eDART.

Future enhancement to implement checks that the outage dates are valid based on the outage type selected.

Current EMS Trip logic ignores normally open equipment when auto-generating eDART tickets.

Normally open equipment in closed state may not be reported.

Update to the EMS Trip logic to generate eDART tickets for normally open equipment that PJM's EMS reports as closed.

- Other EMS Trip ticket rules apply (equipment type, voltage level, etc.)
- Equipment reported in Linesout file.

## Current functionality

- When a new ticket is created for equipment with a Submitted ticket, the status of the Submitted ticket is changed to 'Cancelled by Company'
  - PJM Comment is added: "Ticket replaced by RXB Ticket# XXXX".

This will also be applied to tickets in Awaiting Build status.

Existing overlapping Awaiting Build tickets will be reviewed – most recent ticket (by submit date) for equipment will be kept; the older ones will be cancelled and comment added.

eDART Help: [edarthelp@pjm.com](mailto:edarthelp@pjm.com)

Chidi Ofoegbu: [Chidi.Ofoegbu@pjm.com](mailto:Chidi.Ofoegbu@pjm.com)

Vy Le: [Vy.Le@pjm.com](mailto:Vy.Le@pjm.com)