

# TEAC Committee AEP Supplemental Project

June 2, 2020

# Solutions

Stakeholders must submit any comments within 10 days of this meeting in order to provide time necessary to consider these comments prior to the next phase of the M-3 process

## AEP Transmission Zone M-3 Process Rockport Station Improvements

**Need Number:** AEP-2019-IM042

**Previously Presented:** Needs Meeting 11/14/2019

**Process Stage:** Solution Meeting 06/02/2020

**Supplemental Project Driver:** Equipment Condition/Performance/Risk

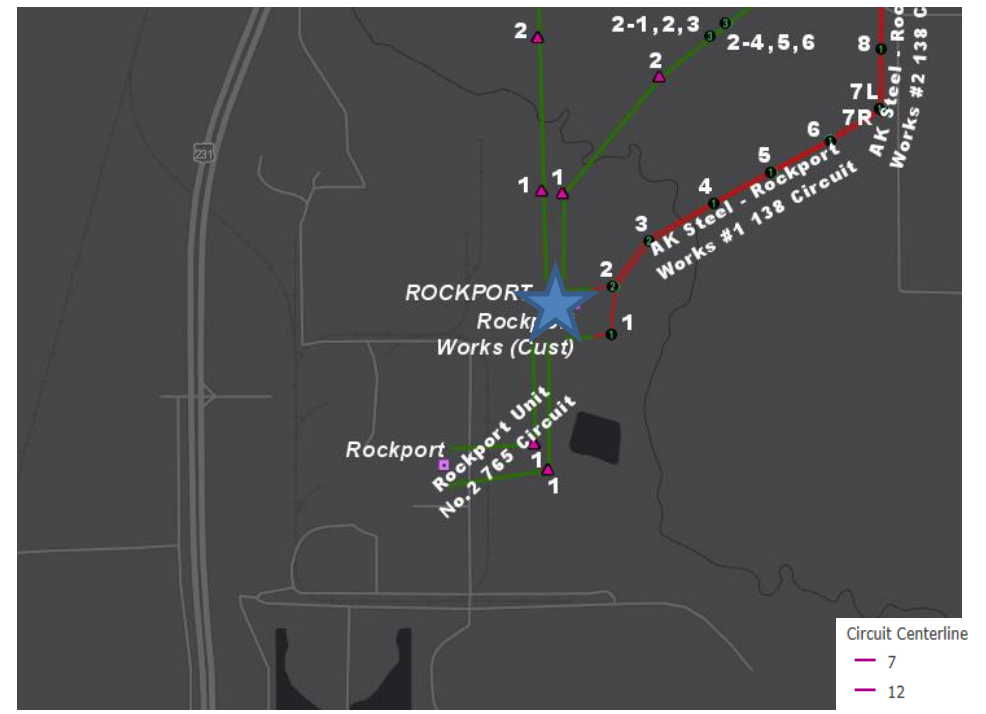
**Specific Assumptions Reference:** AEP Guidelines for Transmission Owner Identified Needs (AEP Assumptions Slide 8)

**Problem Statement:**

Rockport 765kV Station

765kV CB's A, B, B1, B2, C and C2

- These Rockport CB's are ELF-SL8-4 Type SF6 breakers.
- As of September 2019 there are 9 of these breakers remaining in AEP's system including CB A at Sullivan station which just recently failed under AEP-2019-IM036.
- Since 2002, there have been 16 documented issues with the 9 remaining breakers dealing primarily with compressor failures and failure to open/reclose.



- Circuit Centerline
- 7
  - 12
  - 14
  - 23
  - 34
  - 40
  - 46
  - 69
  - 88
  - 115
  - 138
  - 161
  - 230
  - 345
  - 500
  - 765

**Need Number:** AEP-2019-IM042

**Process Stage:** Solutions Meeting 06/02/2020

**Proposed Solution:**

**Rockport 765kV Station:**

Replace Rockport CB's B, B2, C and C2 with 765kV SFMT 4000A Cb's

**Total Estimated Transmission Cost: \$18.5M**

**Alternatives Considered:**

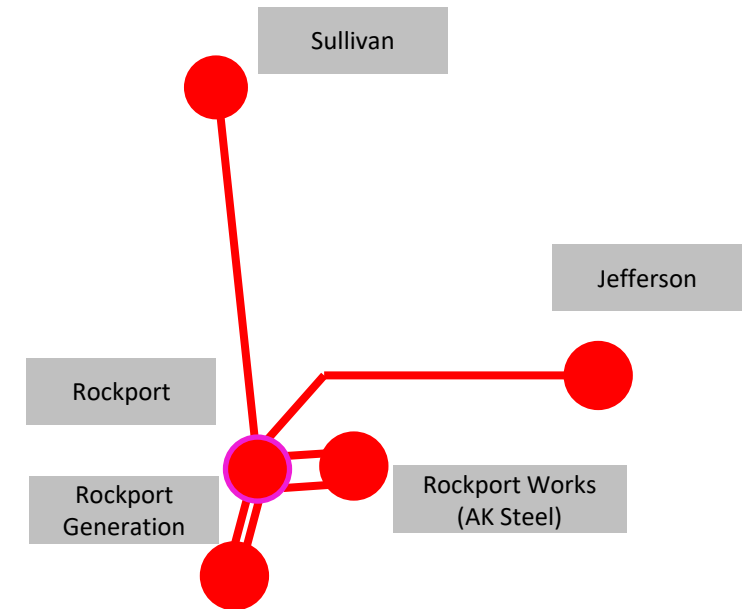
Replace CB's A and B1 as well as B, B2, C and C2. Due to scarcity of outage availability at this station due to the generator and the customer feeds, this would take until late 2025. With this in mind and with the future of the generation unknown at this time AEP has chosen to move ahead with the 4 breakers that protect the lines and customer load. In the future, when the generation's future is solidified we will re-evaluate the 2 remaining breakers to see if they are still needed.

**Cost: \$27.8M**

**Projected ISD: 10/1/2024**

**Project Status: Scoping**

## AEP Transmission Zone: Supplemental Rockport Station Improvements



Legend	
765 kV	
345 kV	
138 kV	
69 kV	
34.5 kV	
23 kV	
New	

# Appendix

# High Level M-3 Meeting Schedule

Assumptions	Activity	Timing
	Posting of TO Assumptions Meeting information	20 days before Assumptions Meeting
	Stakeholder comments	10 days after Assumptions Meeting
Needs	Activity	Timing
	TOs and Stakeholders Post Needs Meeting slides	10 days before Needs Meeting
	Stakeholder comments	10 days after Needs Meeting
Solutions	Activity	Timing
	TOs and Stakeholders Post Solutions Meeting slides	10 days before Solutions Meeting
	Stakeholder comments	10 days after Solutions Meeting
Submission of Supplemental Projects & Local Plan	Activity	Timing
	Do No Harm (DNH) analysis for selected solution	Prior to posting selected solution
	Post selected solution(s)	Following completion of DNH analysis
	Stakeholder comments	10 days prior to Local Plan Submission for integration into RTEP
	Local Plan submitted to PJM for integration into RTEP	Following review and consideration of comments received after posting of selected solutions

# Revision History

5/21/2020 – V1 – Original version posted to pjm.com

7/13/2020 – V2 – Slide #4, Correct the Need number to AEP-2019-IM042