

Sub-Regional RTEP Committee – Mid-Atlantic PPL Supplemental Projects

July 18th, 2024

Needs

Stakeholders must submit any comments within 10 days of this meeting in order to provide time necessary to consider these comments prior to the next phase of the M-3 process

PPL Transmission Zone: Supplemental Grand Landmark, PA

Need Number: PPL-2024-0005

Process Stage: Need Meeting SRRTEP-MA - 07/18/2024

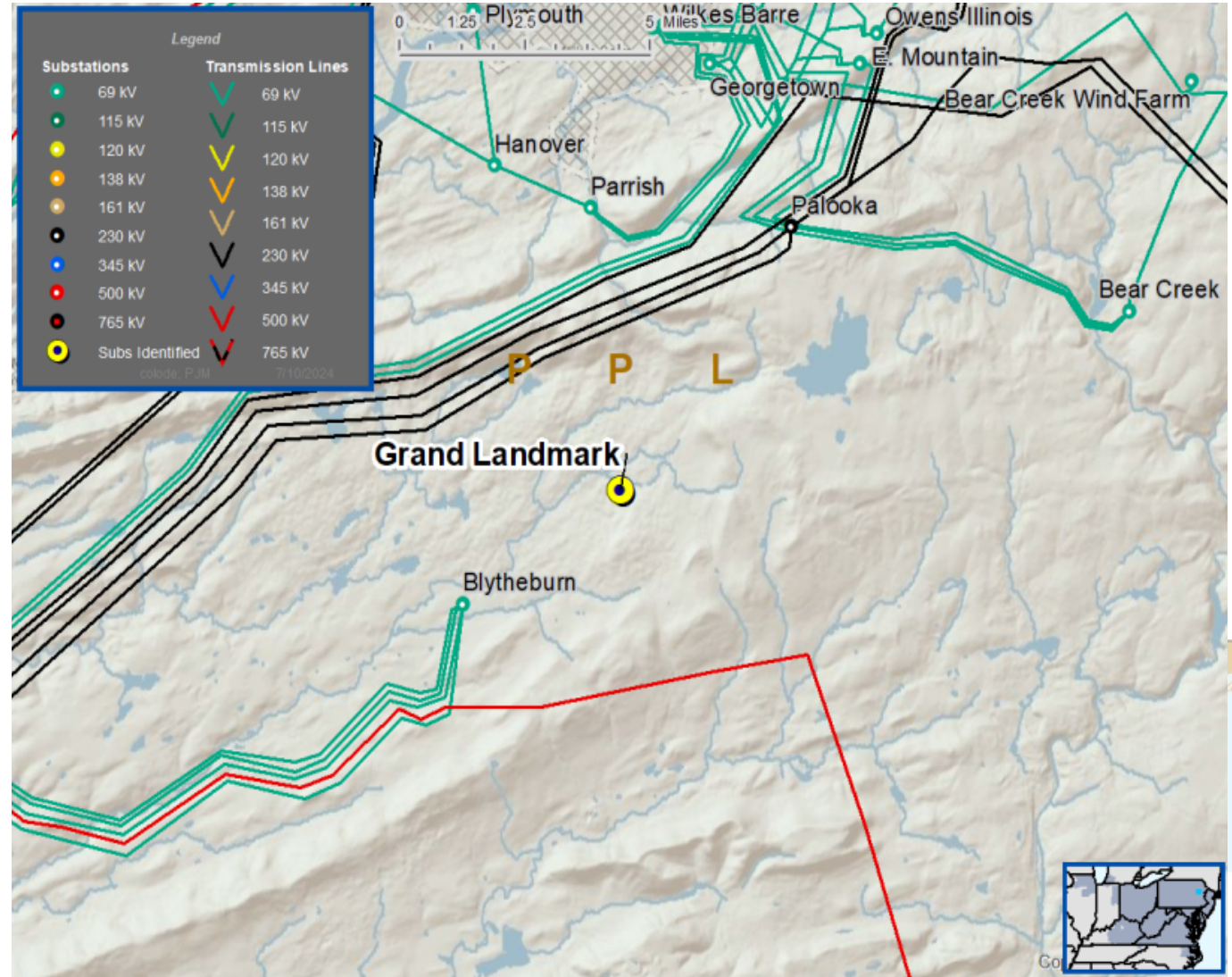
Project Driver: Customer Service

Specific Assumption References:

PPL 2024 Annual Assumptions

Problem Statement:

A customer has submitted a request to have their facility served from a 69kV transmission line in Mountain Top, PA. The load is approximately 40 MVA. The requested In-service date is 8/1/2025.



PPL Transmission Zone: Supplemental Hamilton, PA

Need Number: PPL-2024-0006

Process Stage: Need Meeting SRRTEP-MA - 07/18/2024

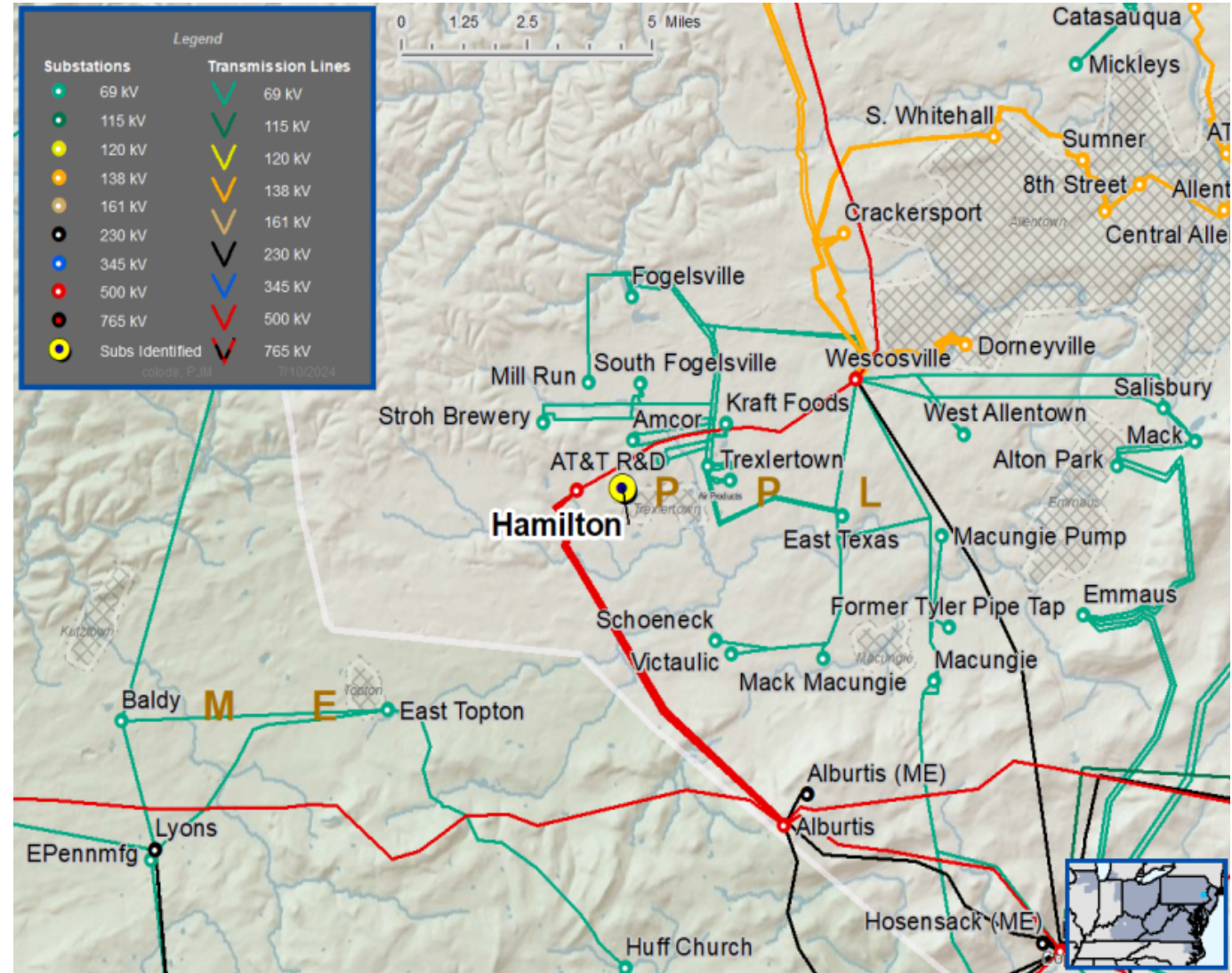
Project Driver: Customer Service

Specific Assumption References:

PPL 2024 Annual Assumptions

Problem Statement:

A customer has submitted a request to have their facility served from a double circuit 69kV transmission line in Breinigsville, PA. The requested load is approximately 100 MVA. The requested in service date is 5/14/2026.



PPL Transmission Zone: Supplemental Stanton 69, PA/Summit 69 (PL), PA

Need Number: PPL-2024-0007

Process Stage: Need Meeting SRRTEP-MA - 07/18/2024

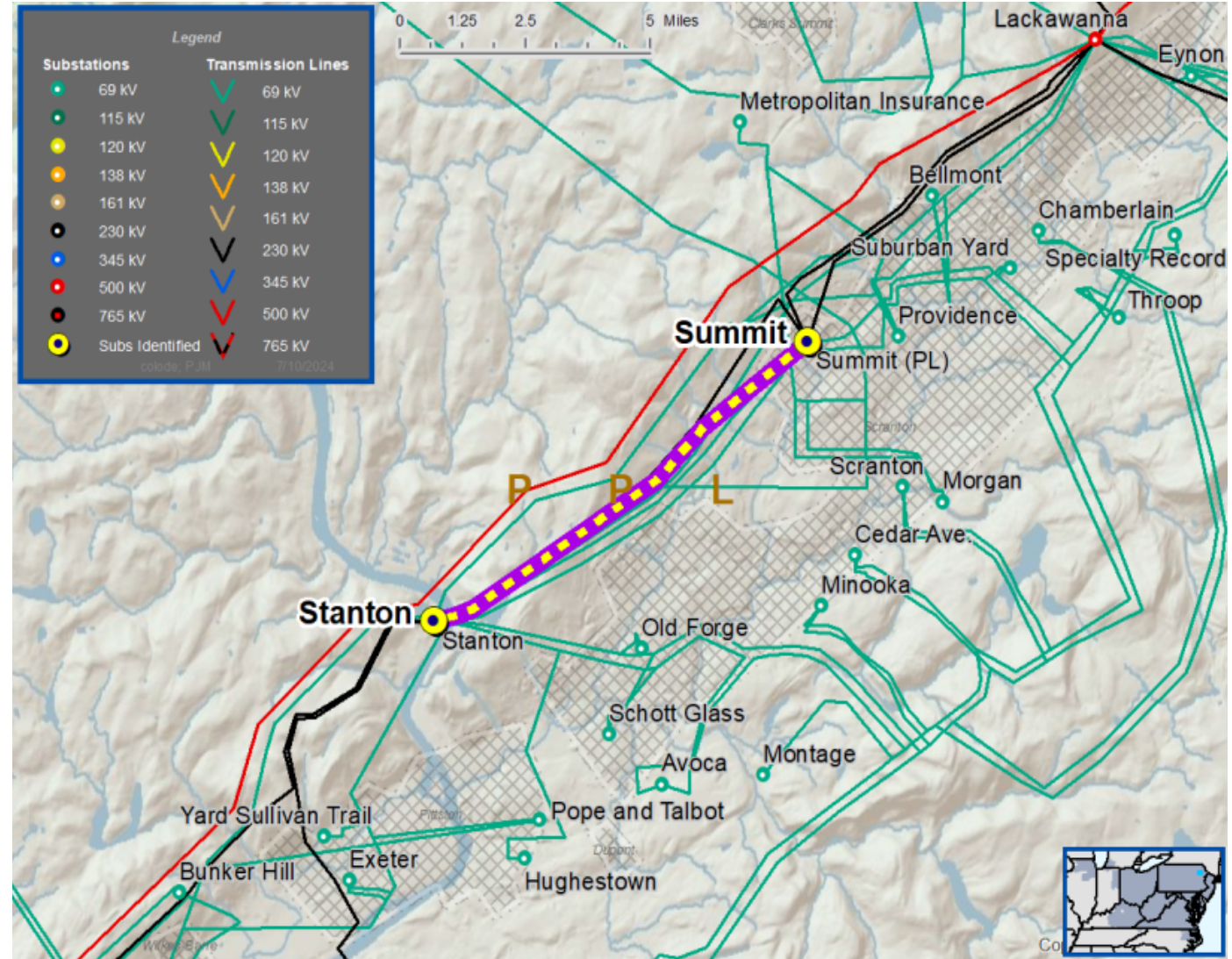
Project Driver: Equipment Condition/Performance/Risk

Specific Assumption References:

PPL 2024 Annual Assumptions

Problem Statement:

The Stanton-Summit 69kV 1&2 lines area reliability risk due to poor asset health. The line is in poor condition with the original assets installed in 1926. The line consists of 86 vintage lattice poles, two vintage wood poles, and 12 poles replaced after 2000. The 4/0 stranded CU conductor is original. The line has experienced 4 operations (3 momentary and 1 permanent) since 2016.



PPL Transmission Zone: Supplemental Old Forge, PA/Avoca, PA

Need Number: PPL-2024-0008

Process Stage: Need Meeting SRRTEP-MA - 07/18/2024

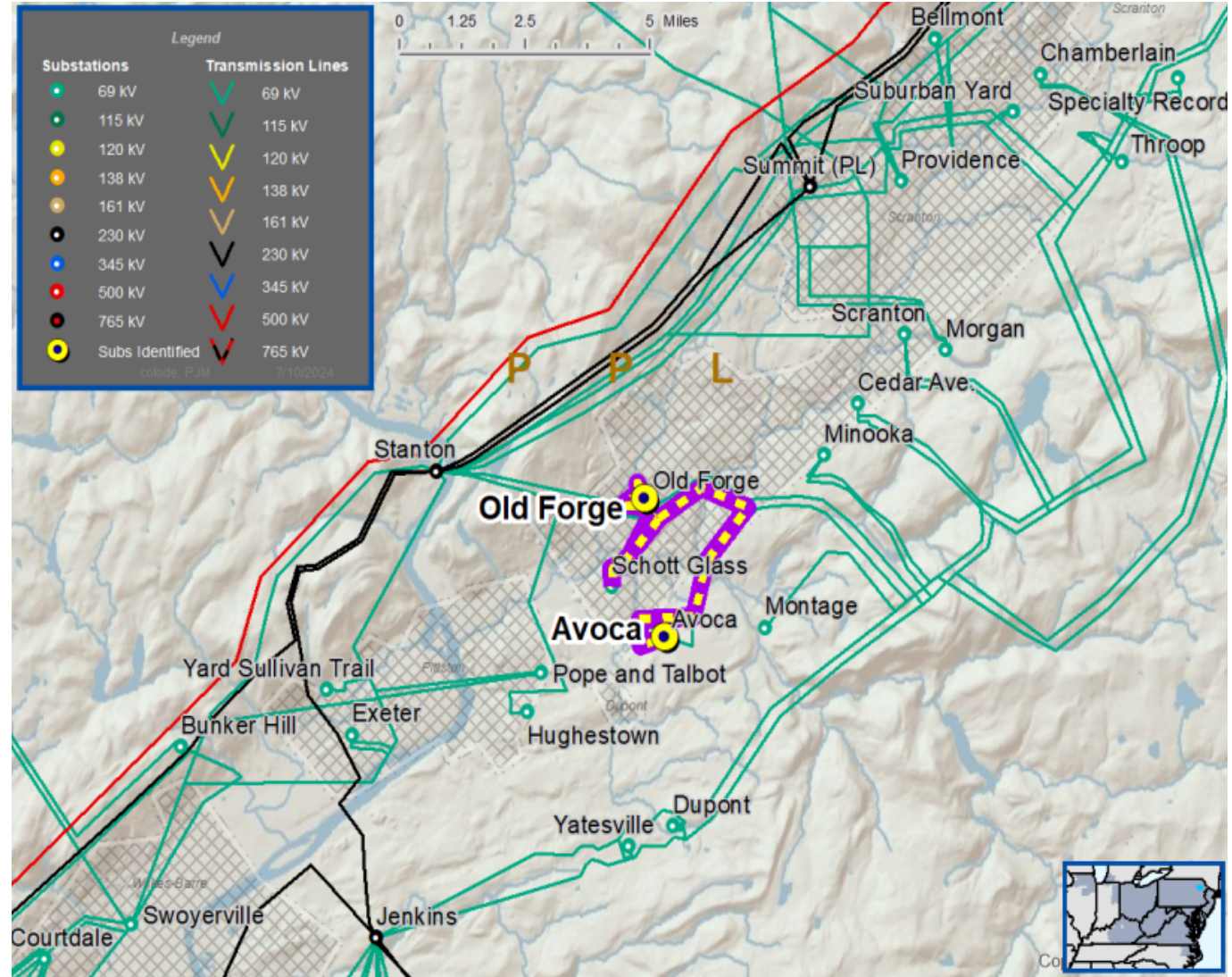
Project Driver: Equipment Condition/Performance/Risk

Specific Assumption References:

PPL 2024 Annual Assumptions

Problem Statement:

The Old Forge-Avoca 69kV Tie line is a reliability risk due to poor asset health. The line is in poor condition with the original assets installed in the 1925. The line consists of 38 vintage poles and 18 poles replaced since 2000. The 4/0 CU conductor is original. The line has experienced 1 permanent outage since 2013.



PPL Transmission Zone: Supplemental Exeter, PA/Stanton 69, PA

Need Number: PPL-2024-0009

Process Stage: Need Meeting SRRTEP-MA - 07/18/2024

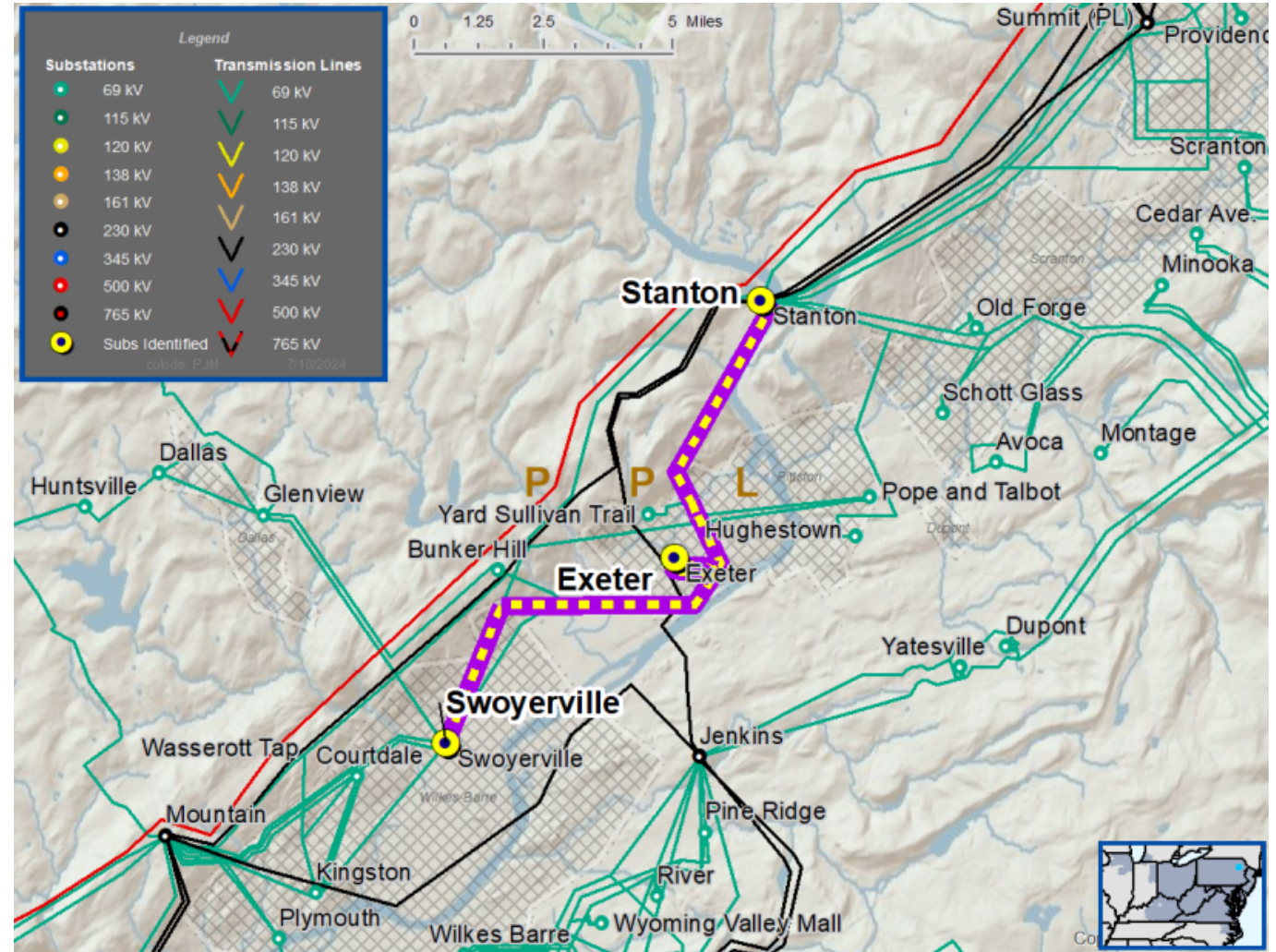
Project Driver: Equipment Condition/Performance/Risk

Specific Assumption References:

PPL 2024 Annual Assumptions

Problem Statement:

The Stanton-Swoyerville/Exeter 69kV tap is a reliability risk due to poor asset health. The line is in poor condition with the original assets installed in 1943. The line consists of 98 vintage wood poles, 2 vintage lattice towers, 5 vintage steel embedded poles, and 85 new poles replaced after 2000. The 4/0 CU conductor is original. The line has experienced 3 permanent operations since 2018.



Solution

Stakeholders must submit any comments within 10 days of this meeting in order to provide time necessary to consider these comments prior to the next phase of the M-3 process

PPL Transmission Zone: Supplemental Stonehouse, PA

Need Number: PPL-2024-0002

Process Stage: Solution Meeting SRRTEP-MA - 07/18/2024

Previously Presented: Need Meeting SRRTEP-MA - 05/16/2024

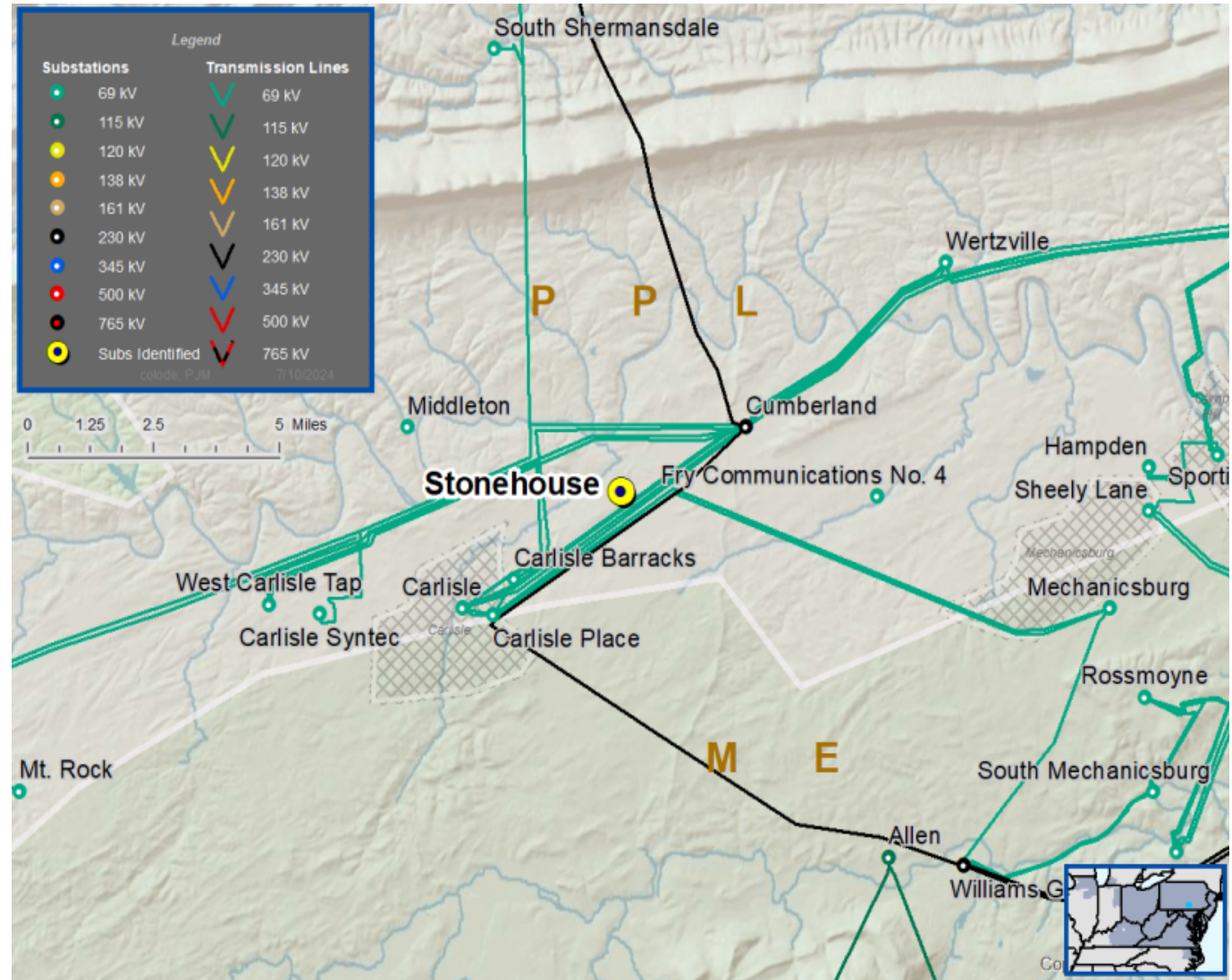
Project Driver: Customer Service

Specific Assumption References:

PPL 2024 Annual Assumptions

Problem Statement:

PPL Distribution has submitted a request for double circuit 69kV service for a new 69-12kV substation near Carlisle, PA. There have been multiple requests for distribution service from new customers with a total expected load addition of 13-18 MWs. The distribution system in the area does not have sufficient capacity to serve the load. The requested in-service date is 6/1/2026.



PPL Transmission Zone: Supplemental Stonehouse, PA

Need number(s): PPL-2024-0002

Process Stage: Solution Meeting SRRTEP-MA - 07/18/2024

Proposed Solution:

Stonehouse 69kV taps: Extend a new double circuit 69kV tap from the existing Cumberland - Carlisle #1 & #2 69kV lines to interconnect the new Stonehouse 69-12.47kV substation. Build 0.1 miles of new 69kV double circuit line using 556 ACSR conductor. Initial loading of ~18MVA..

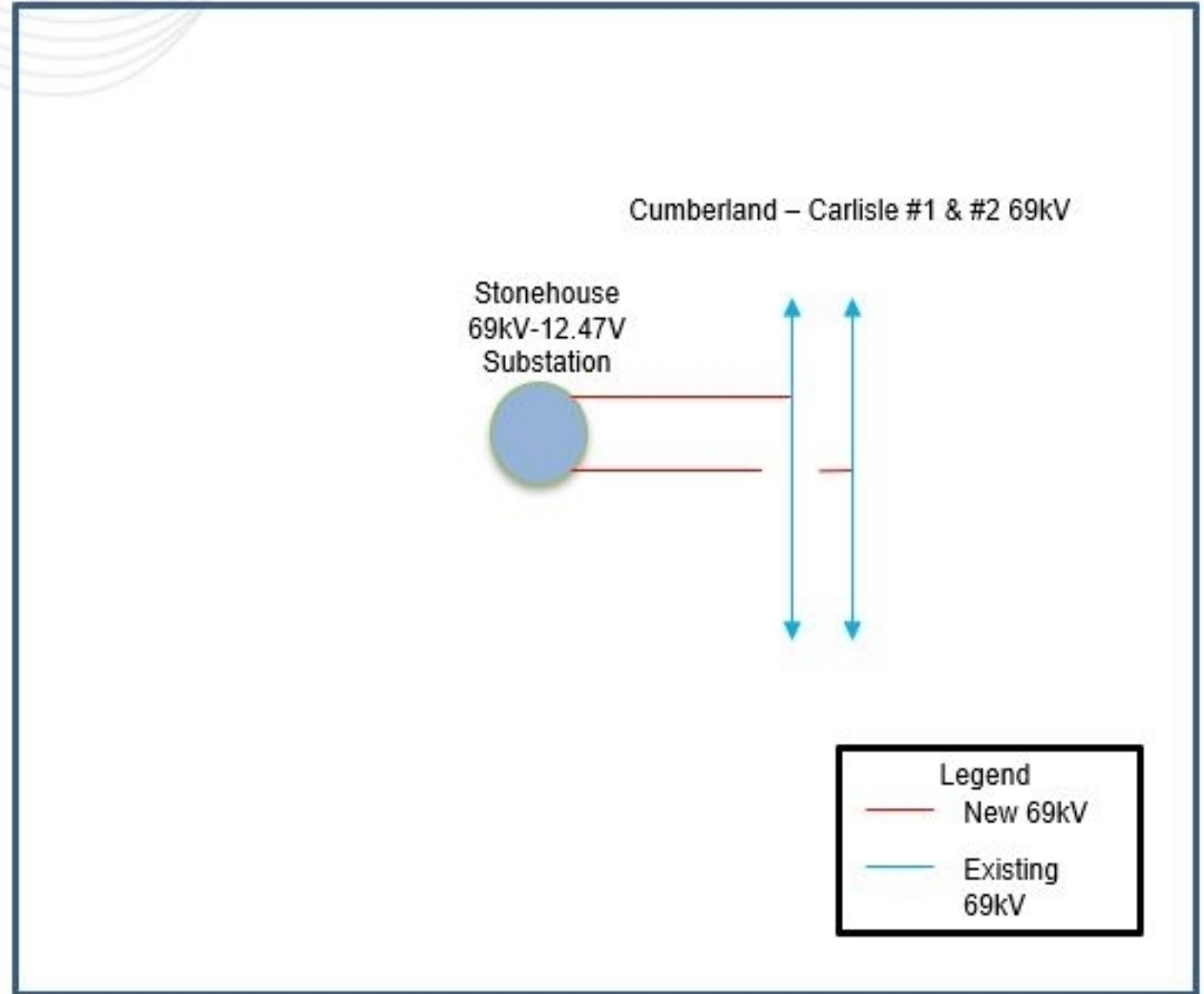
Estimated Cost: \$1.4 M

Transmission Cost Estimate: \$1.4 M

Alternatives Considered: No feasible alternatives

Projected In-Service: 06/01/2026

Project Status: Conceptual.



Appendix

High level M-3 Meeting Schedule

| Assumptions | Activity | Timing |
|--|---|---|
| | Posting of TO Assumptions Meeting information | 20 days before Assumptions Meeting |
| | Stakeholder comments | 10 days after Assumptions Meeting |
| Needs | Activity | Timing |
| | TOs and Stakeholders Post Needs Meeting slides | 10 days before Needs Meeting |
| | Stakeholder comments | 10 days after Needs Meeting |
| Solutions | Activity | Timing |
| | TOs and Stakeholders Post Solutions Meeting slides | 10 days before Solutions Meeting |
| | Stakeholder comments | 10 days after Solutions Meeting |
| Submission of Supplemental Projects & Local Plan | Activity | Timing |
| | Do No Harm (DNH) analysis for selected solution | Prior to posting selected solution |
| | Post selected solution(s) | Following completion of DNH analysis |
| | Stakeholder comments | 10 days prior to Local Plan Submission for integration into RTEP |
| | Local Plan submitted to PJM for integration into RTEP | Following review and consideration of comments received after posting of selected solutions |

Revision History

07/08/2024 – V1 – Original version posted to pjm.com