

Subregional RTEP Committee – Mid-Atlantic FirstEnergy Supplemental Projects

February 17, 2022

Needs

Stakeholders must submit any comments within 10 days of this meeting in order to provide time necessary to consider these comments prior to the next phase of the M-3 process

Need Number: JCPL-2022-001

Process Stage: Need Meeting 02/17/2022

Project Driver:

Customer Service

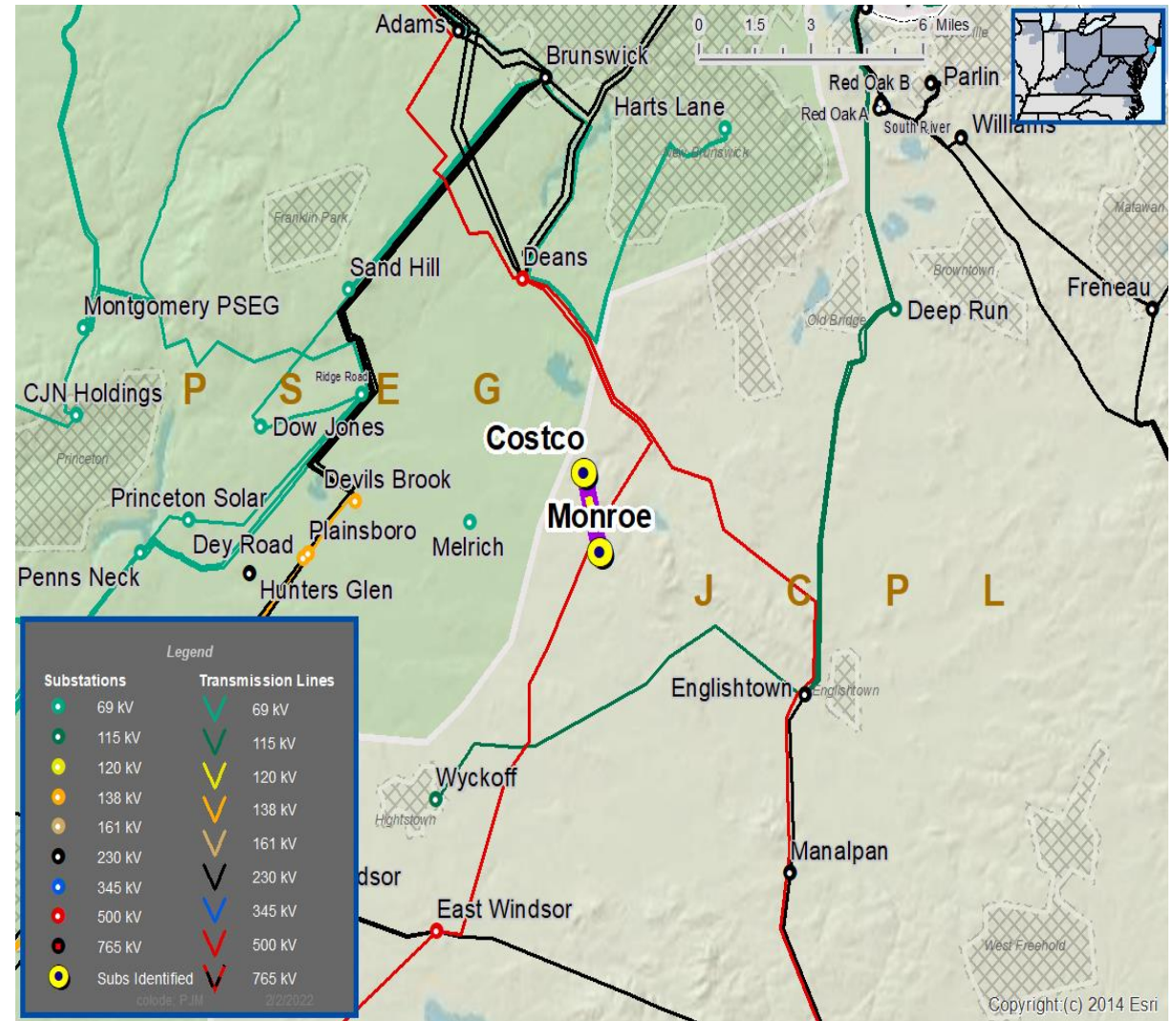
Specific Assumption Reference:

Customer request will be evaluated per FirstEnergy’s “Requirements for Transmission Connected Facilities” document and “Transmission Planning Criteria” document.

Problem Statement:

New Customer Connection: An existing customer with 12.5 kV service requested 34.5 kV service. The anticipated load is 13.9 MW. Location is near the Costco – Monroe 34.5 kV Line.

Requested in-service date is June 2022.



Need Number: JCPL-2022-002

Process Stage: Need Meeting 02/17/2022

Project Driver:

Customer Service

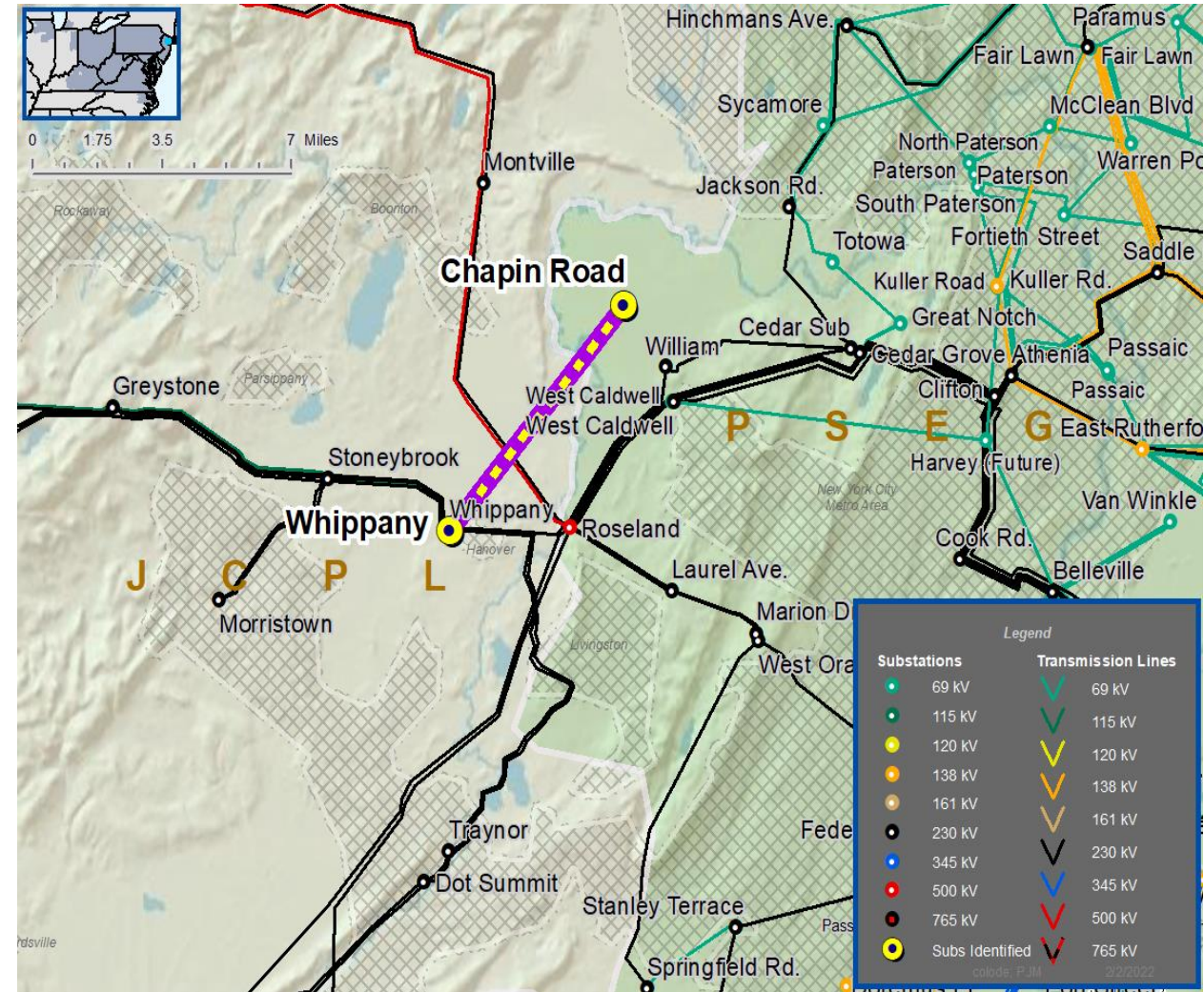
Specific Assumption Reference:

Customer request will be evaluated per FirstEnergy’s “Requirements for Transmission Connected Facilities” document and “Transmission Planning Criteria” document.

Problem Statement:

Existing Customer Connection: An existing 34.5 kV customer requested removal and demolition of their existing service. Location is on the Chapin Road - Whippany 34.5 kV Line. Line tap to the customer has been de-energized.

Requested in-service date is April 2022.



Questions?



Appendix

High level M-3 Meeting Schedule

Assumptions	Activity	Timing
	Posting of TO Assumptions Meeting information	20 days before Assumptions Meeting
	Stakeholder comments	10 days after Assumptions Meeting
Needs	Activity	Timing
	TOs and Stakeholders Post Needs Meeting slides	10 days before Needs Meeting
	Stakeholder comments	10 days after Needs Meeting
Solutions	Activity	Timing
	TOs and Stakeholders Post Solutions Meeting slides	10 days before Solutions Meeting
	Stakeholder comments	10 days after Solutions Meeting
Submission of Supplemental Projects & Local Plan	Activity	Timing
	Do No Harm (DNH) analysis for selected solution	Prior to posting selected solution
	Post selected solution(s)	Following completion of DNH analysis
	Stakeholder comments	10 days prior to Local Plan Submission for integration into RTEP
	Local Plan submitted to PJM for integration into RTEP	Following review and consideration of comments received after posting of selected solutions

Revision History

2/7/2022 – V1 – Original version posted to pjm.com