

Sub Regional RTEP Committee Mid-Atlantic ODEC Supplemental Projects

August 27, 2019

Solutions

Stakeholders must submit any comments within 10 days of this meeting in order to provide time necessary to consider these comments prior to the next phase of the M-3 process



ODEC Transmission Zone M-3 Process 6745-6746 Underground Near Wallops Flight Facility

Need Number: ODEC-2019-001

Process Stage: Solutions Meeting August 27, 2019

Previously Presented: Needs Meeting May 31, 2019

Project Drivers: End of Life Criteria, Equipment Material Condition, Performance and Risk, Violations of Government Regulations

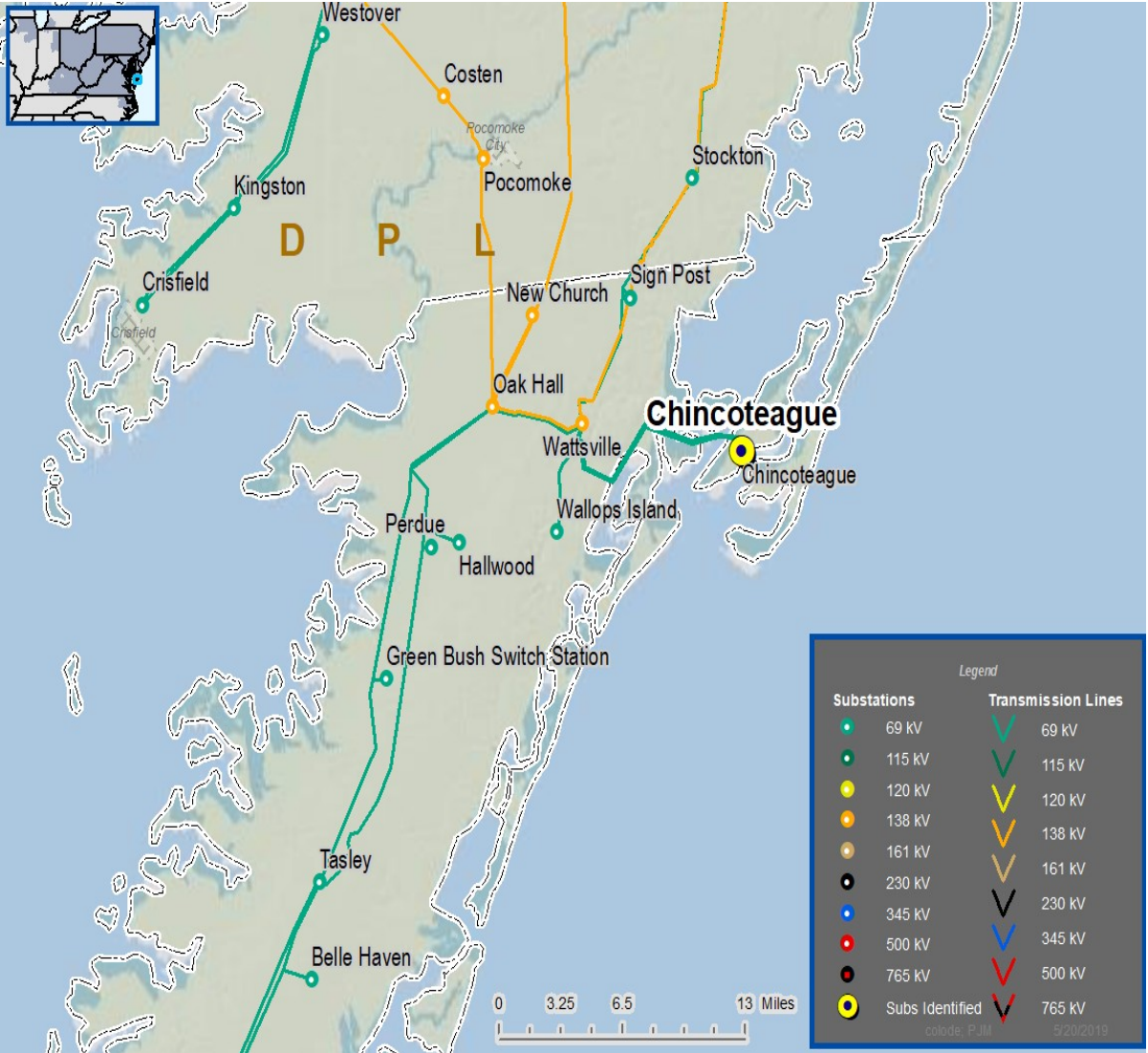
Specific Assumption Reference:

ODEC Assumptions 12/7/2018: End of Life Criteria III.B.2. and External Code Requirements Criteria I.C.

- ODEC shall replace aged facilities which because of their age or condition pose a risk to reasonable reliability and resilience levels.
- The ODEC transmission system shall be constructed in adherence with Government regulations, including, but not limited to those from: FCC, FAA, and DHS.

Problem Statement:

- The two 69 kV lines serving Chincoteague (rated 36 MW each) are nearing end of life (pole line installed 1983). Wood poles are exhibiting rot.
- Both lines are co-located on several of the structures resulting in loss of all load on Chincoteague Island under single contingency.
- Existing poles are difficult to access in Simoneaston Bay tidal marsh on Fish & Wildlife controlled land
- Existing poles violate FAA glide path clearances for the Wallops Island NASA flight facility.





Need Number: ODEC-2019-001

Process Stage: Solutions Meeting August 27, 2019

Proposed Solution:

Install underground section of the feed from Wattsville to Chincoteague

- Meets FAA criteria
- Has support of NASA and USFWS

Estimate Cost: \$6 M

Alternative Considered:

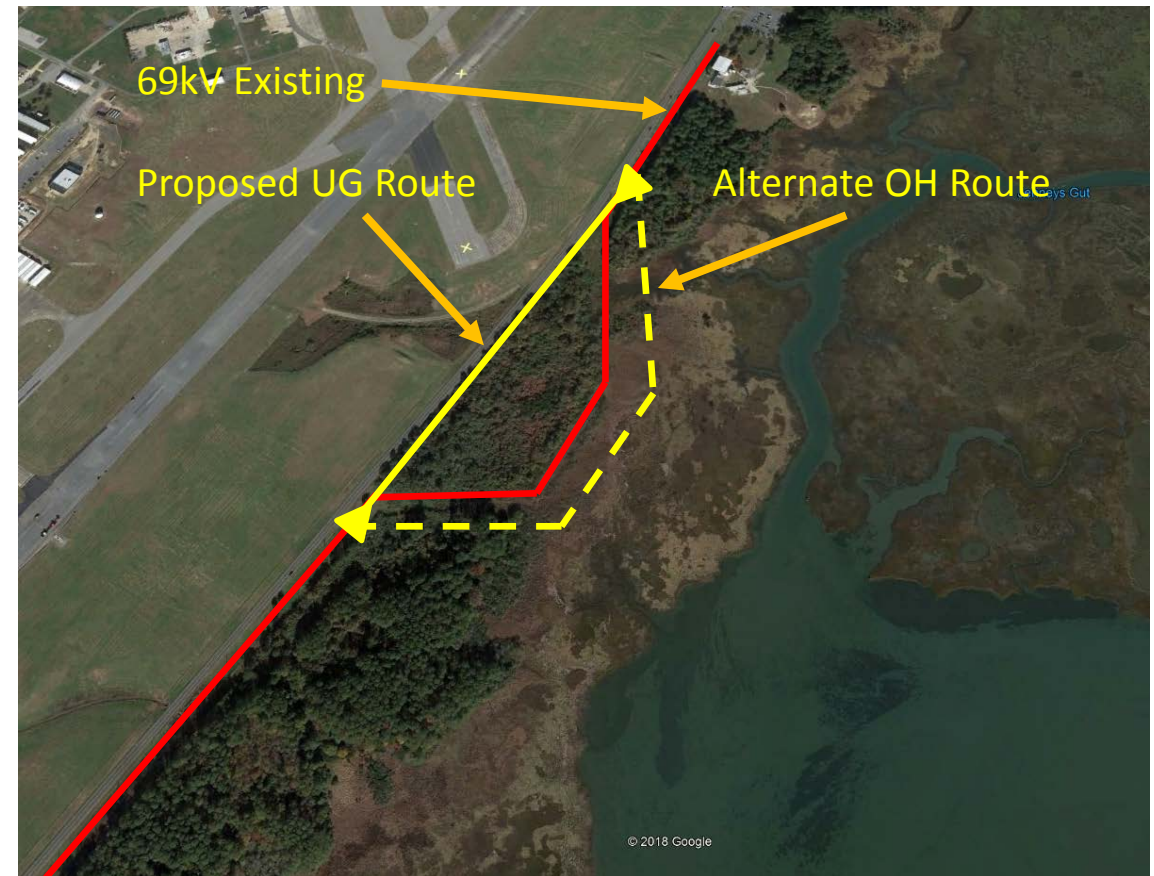
Relocate Overhead Farther From Runway \$3 Million

- Difficult to access in marsh, higher O&M and equipment costs
- New ROW has higher impact on Wildlife Refuge
- Requires wetlands mitigation

Projected In-Service: May 31, 2022

Project Status: Preliminary Engineering

Model: 2018 Series 2023 Summer RTEP 50/50





ODEC Transmission Zone M-3 Process Plantation Substation

Need Number: ODEC-2019-002

Process Stage: Solutions Meeting August 27, 2019

Previously Presented:

Needs Meeting May 31, 2019

Project Driver:

Transmission Customer Request

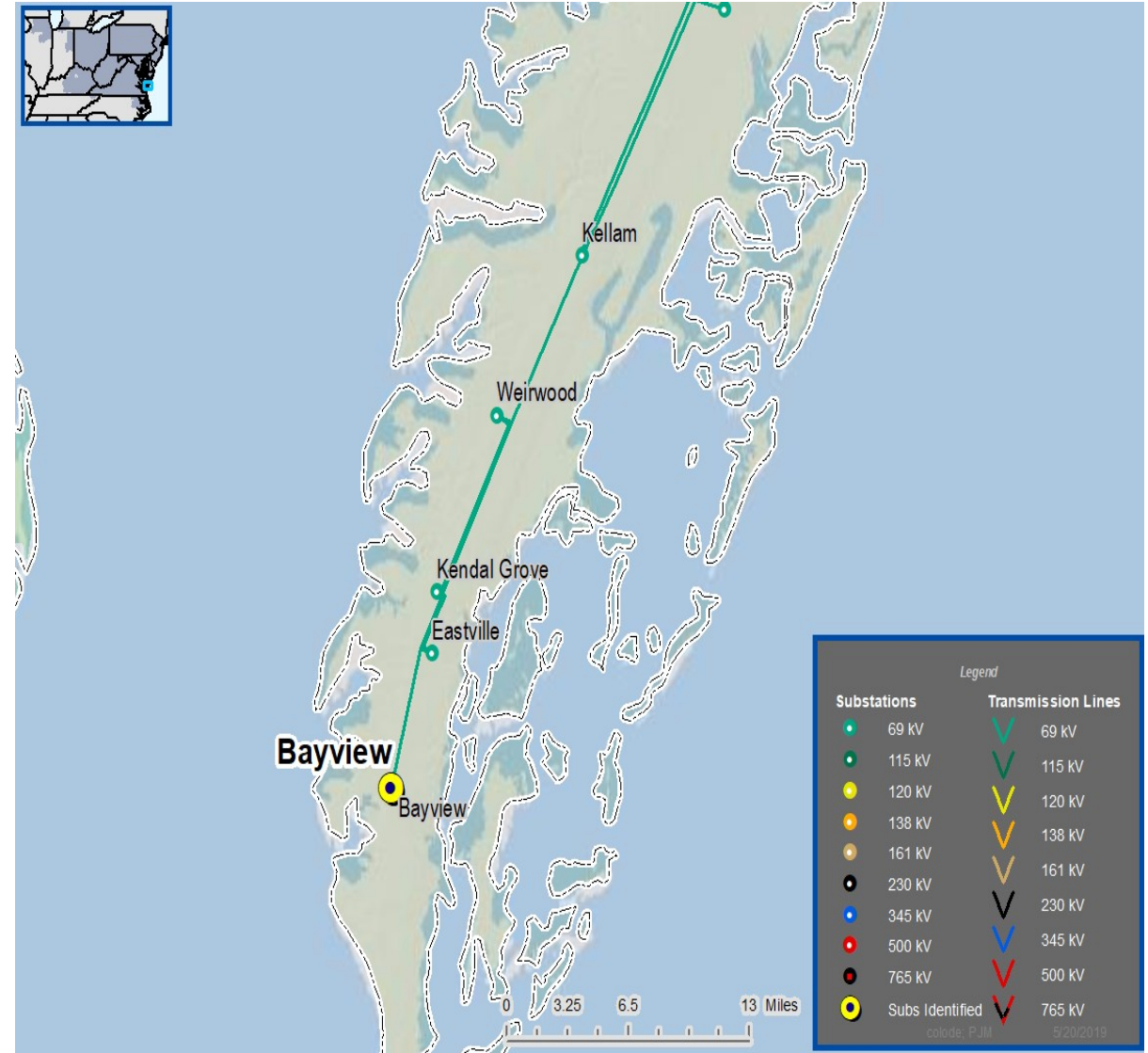
Specific Assumption Reference:

ODEC Assumptions December 7, 2018

- Interconnection Points II.A: ODEC shall modify or add interconnection points as needed in accordance with applicable interconnection agreements

Problem Statement:

- Load Serving Transmission Customer has requested a new delivery point (Plantation Substation) and retirement of existing Bayview Sub D.P.
- Customer is doing a voltage conversion and consolidating substations and retiring several D.P.s.
- Load increase on this sub due to consolidation is 4 MW (Current load 18 MW, new load 22 MW).
- Current site constrained due to existing PJM generator collocated at site



Need Number: ODEC-2019-002

Process Stage: Solutions Meeting August 27, 2019

Proposed Solution:

Connect Proposed Plantation Substation \$4 Million

Alternative Considered:

None Available

Projected In-Service: May 31, 2020

Project Status: Engineering

Model: 2018 Series 2023 Summer RTEP 50/50



Revision History

8/14/2019 – V1 – Original post to pjm.com