




Proposed 18-Month RTEP Cycle

Key Changes from 12-Month Cycle

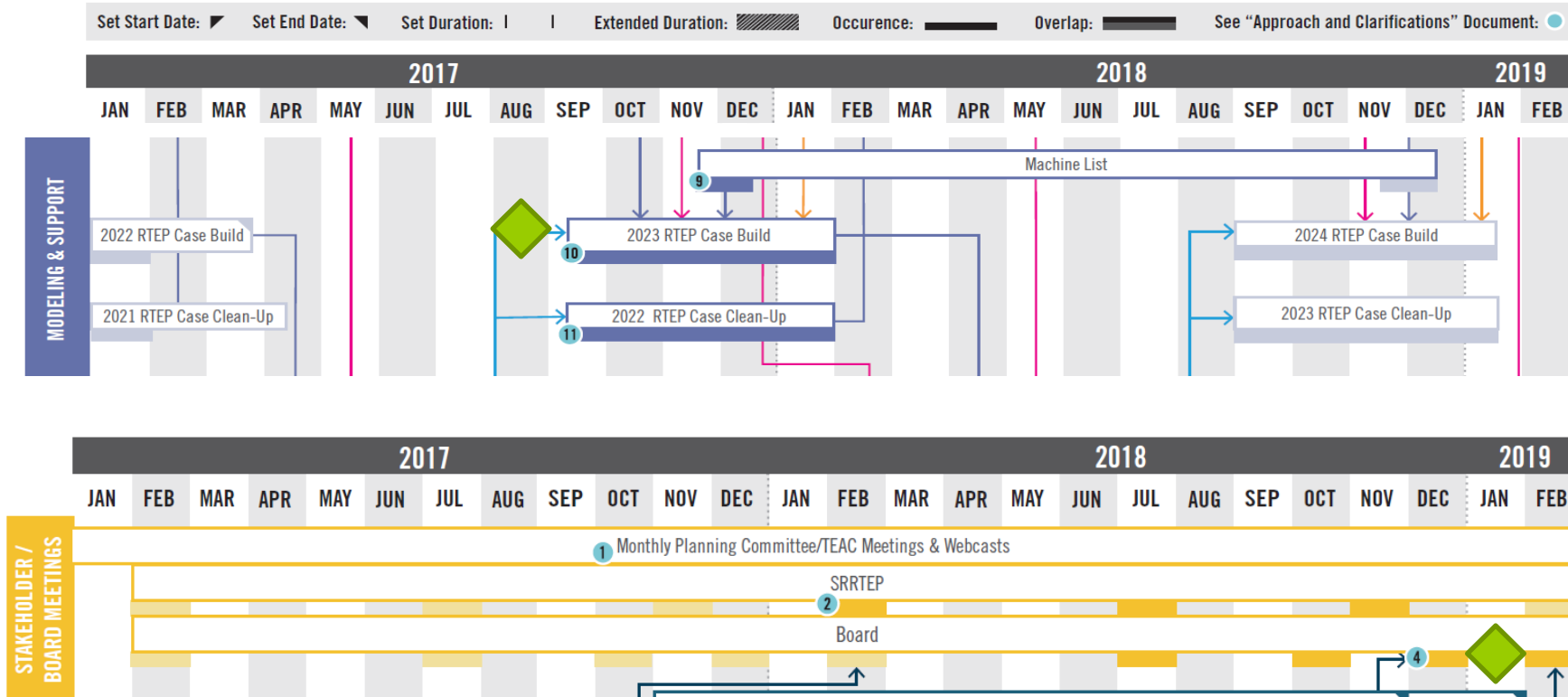
Melissa Maxwell
December 8, 2016

- Currently the RTEP is conducted as an annual cycle that begins in January and ends in December.
- Although the RTEP Cycle is 12 months, RTEP work is done beyond the calendar year.
- PJM is proposing to change the start and end dates of the RTEP Cycle to reflect the full workflow effective the 2023 RTEP Cycle.

- The 18-Month RTEP Cycle supports improved alignment with the new Interconnection Analysis modeling schedule.
- Additionally, the extended Cycle allots more time to evaluate Transmission Operator (TO) Criteria and Lower Voltage Facility Projects.

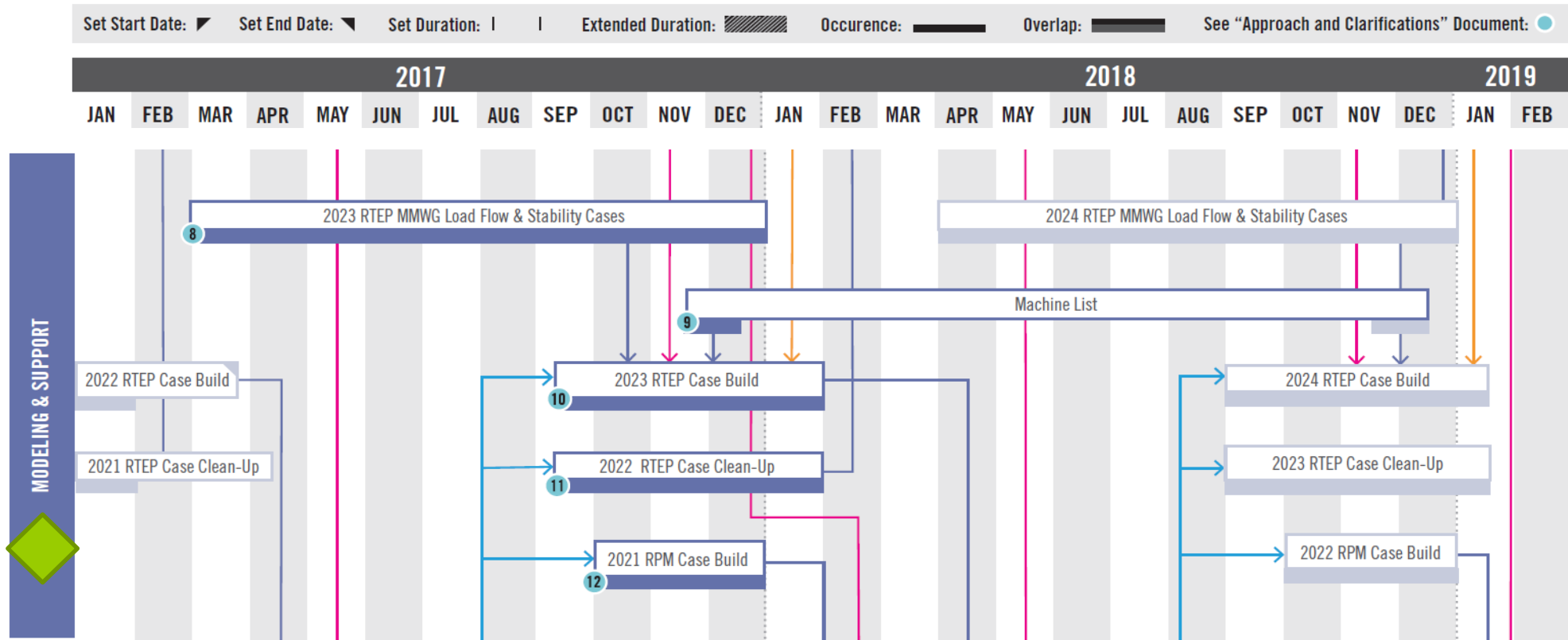
- The 12-month RTEP Cycle reflects workflow timing and duration of the 2021 RTEP Cycle.
- The 18-month RTEP Cycle reflects workflow timing and duration of the 2023 RTEP Cycle.
- Arrows indicate workflow interdependencies.
- Bold/solid colored boxes & arrows represent the 2023 RTEP Cycle.
 - Faded color boxes & arrows represent overlapping cycles.
-  Reflect proposed changes from the current process.

STRUCTURE & TIMING PROPOSED 18-MONTH 2023 RTEP CYCLE



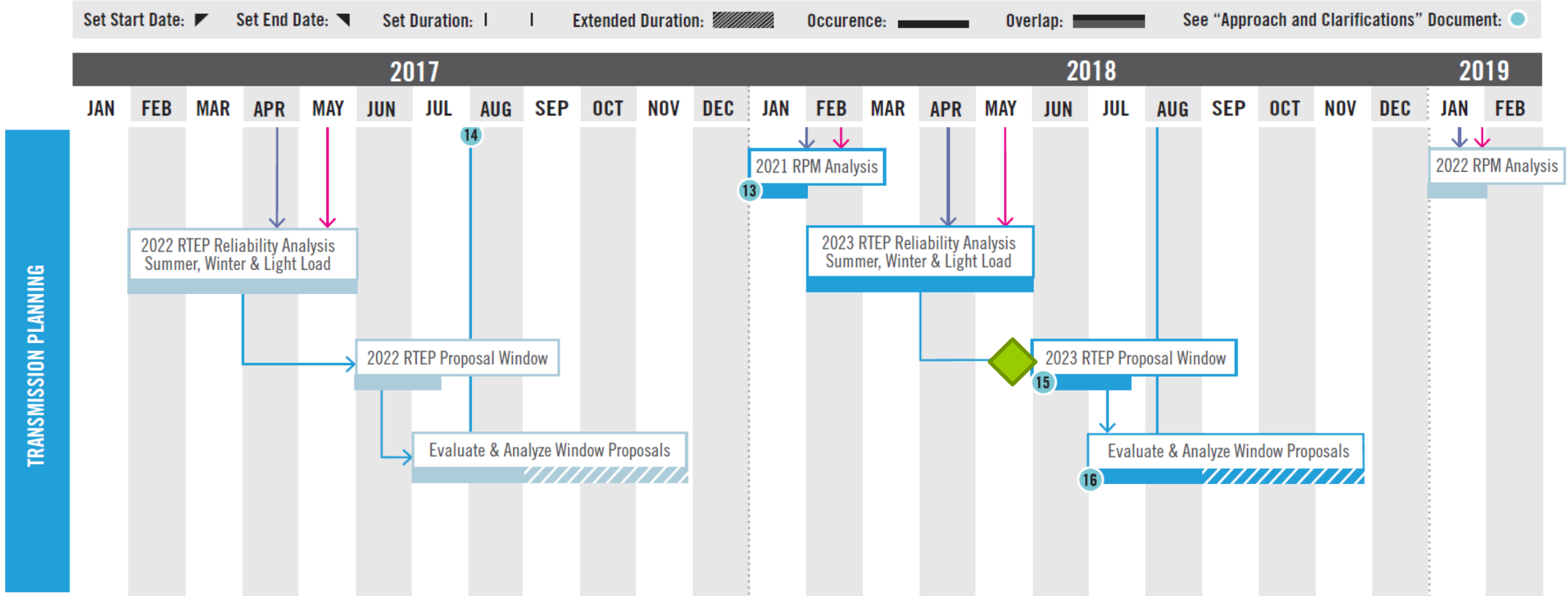
The 2023 RTEP Cycle will begin with the 2023 RTEP Case Build in September 2017 and end with the February 2019 Board meeting.

STRUCTURE & TIMING PROPOSED 18-MONTH 2023 RTEP CYCLE



The Modeling & Support group was created in which one of their primary focuses include Case Builds.

STRUCTURE & TIMING PROPOSED 18-MONTH 2023 RTEP CYCLE



Multiple proposal windows are replaced with one 45-day Window for financial and technical proposals. The 2023 RTEP Proposal Window is targeted to open in June 2018.

- Collect feedback
- Take proposed changes to Planning Committee