

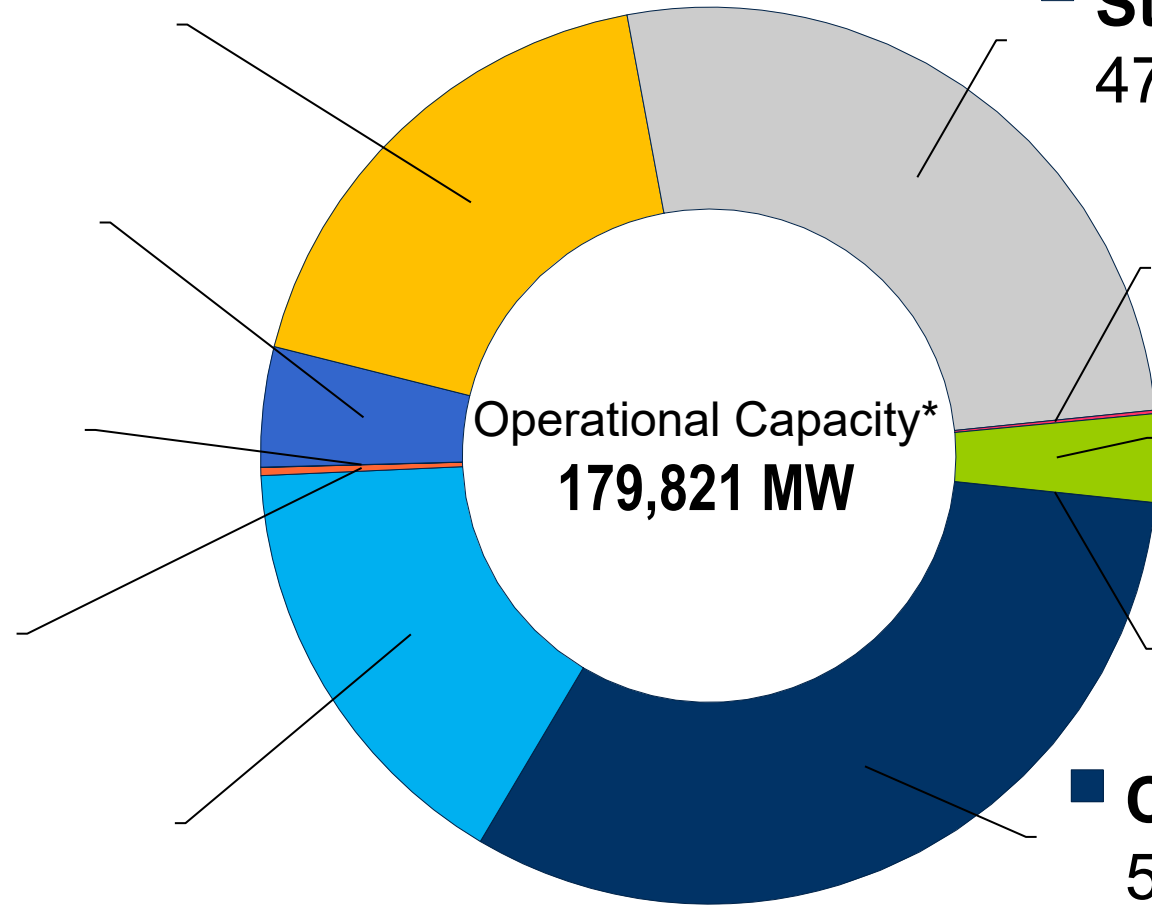


Operations Assessment Task Force 2024-25 Winter Study

Mark Dettrey
Engineer II, Transmission Operations
Operating Committee
October 10, 2024

- **Nuclear**
32,635MW,
- **Hydro**
7,770MW,
- **Fuel Cell**
25MW,
- **Diesel**
524MW,
- **CT**
28,357MW,

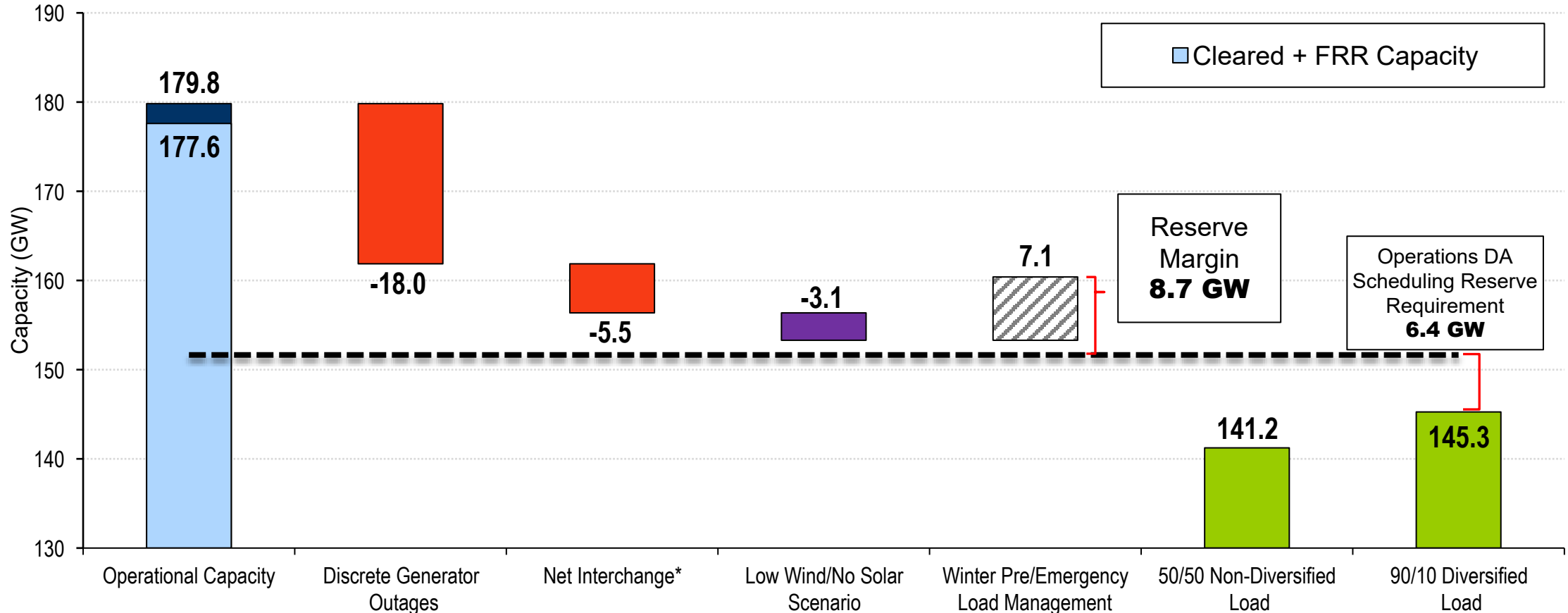
- **Steam**
47,311MW,
- **Solar**
225MW,
- **Wind**
5,694MW,
- **Battery**
22MW,
- **CC**
57,260MW,



*Operational Capacity = ICAP for all units, plus winter ELCC adjusted values for Wind and Solar

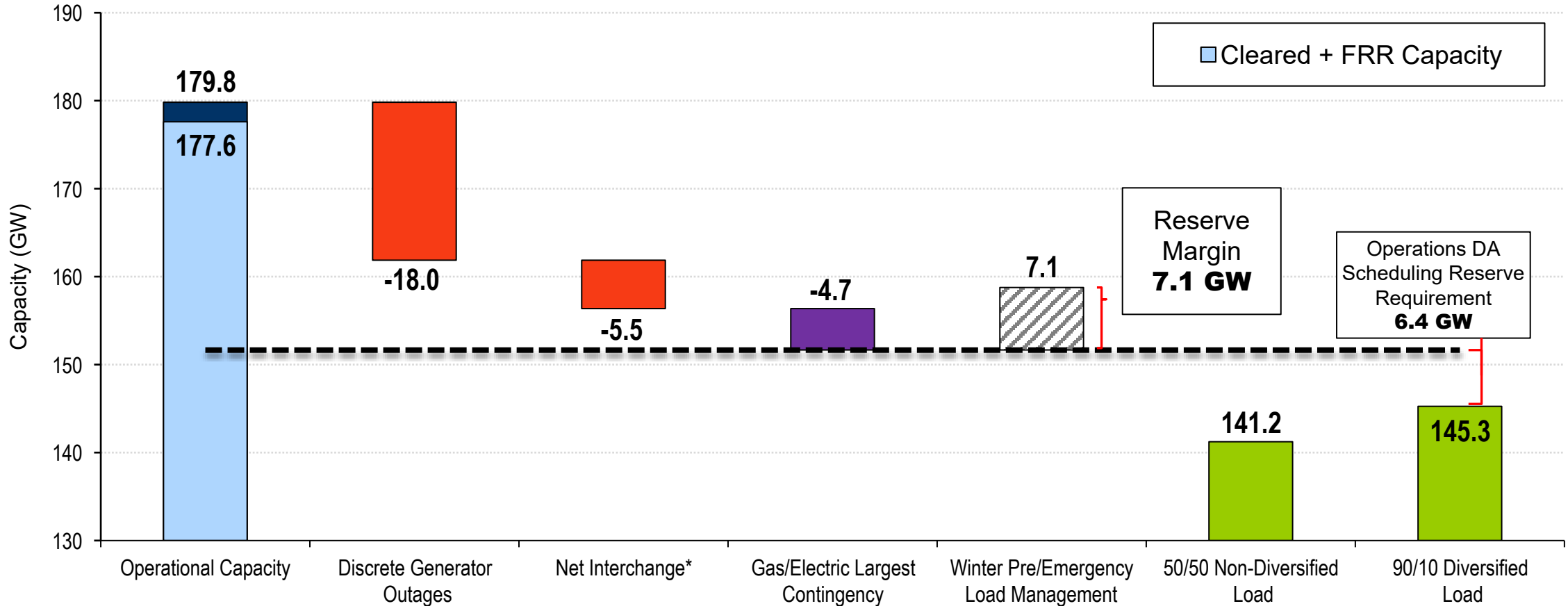
As of Sep. 4, 2024

Winter 2024-25 Low Wind and No Solar Scenario Overview (Preliminary)



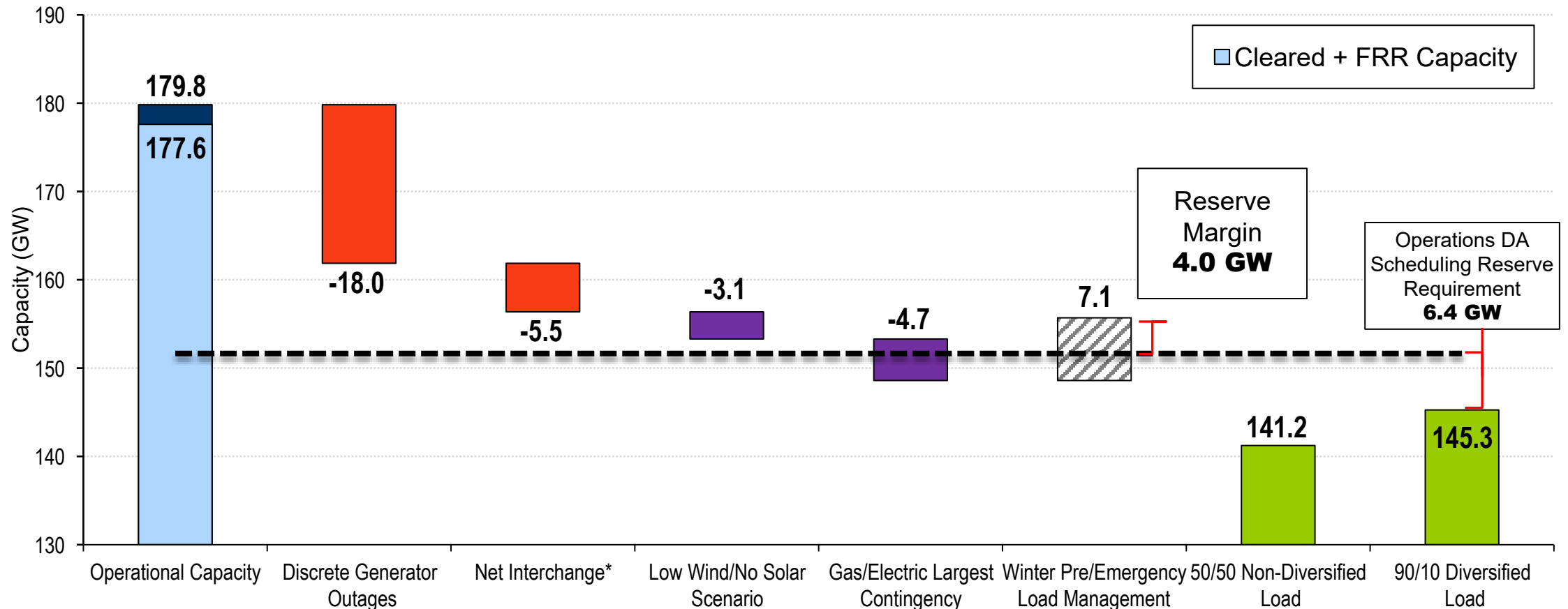
* 3,025MW of **Net Interchange** (5,500MW) is **Firm Interchange** which cannot be recalled

Winter 2024-25 Gas Electric Contingency Scenario Overview (Preliminary)



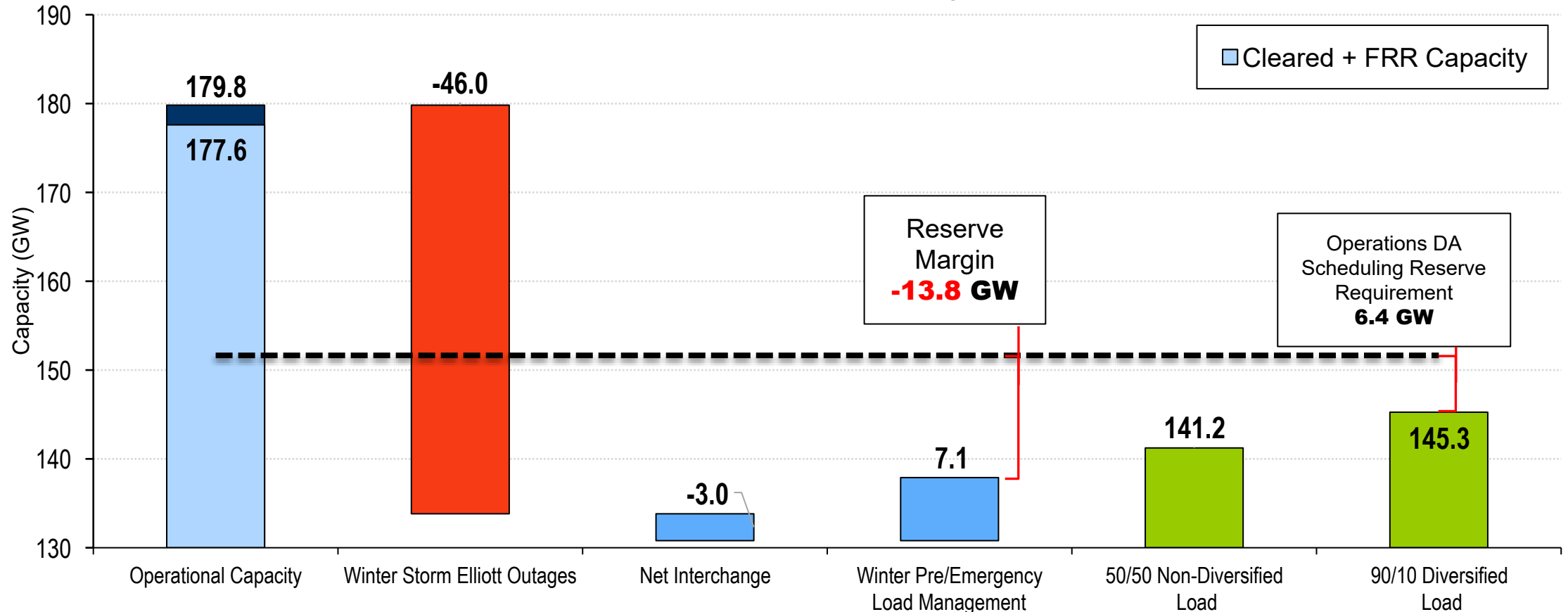
* 3,025MW of Net Interchange (5,500MW) is Firm Interchange which cannot be recalled

Winter 2024-25 Stressed System Scenario Overview (Preliminary)



* 3,025MW of Net Interchange (5,500MW) is Firm Interchange which cannot be recalled

Winter 2024-25 Winter Storm Generation Outages Scenario Overview (Preliminary)



* 3,025MW of **Net Interchange** (5,500MW) is **Firm Interchange** which cannot be recalled

50/50 Non-diversified Peak Load Base Case

LAS Load Forecast	141,233 MW
RTO Case Interchange	4,462 MW** (Exporting)
PJM RTO Installed Capacity	179,821 MW (Preliminary)
Discrete Generator Outages	17,955 MW

**OATF Case Interchange (-4,462 MW) = Forecasted Net Interchange(-5,500 MW) + Pseudo-Tie Adjustment (1,076 MW)

Peak Load Analysis

- No reliability issues identified.

Sensitivity Studies

- In progress
- Results and draft report expected in late October

Presenter:

Mark Dettrey,

Mark.Dettrey@pjm.com

**Operations Assessment Task Force
2024-25 Winter Study**



Member Hotline

(610) 666 – 8980

(866) 400 – 8980

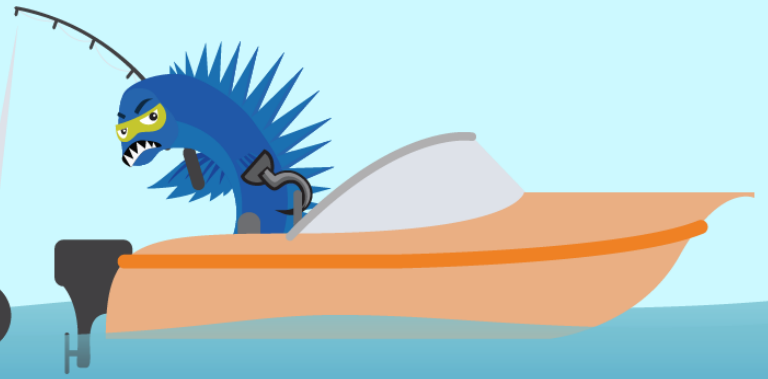
custsvc@pjm.com

**PROTECT THE
POWER GRID**

**THINK BEFORE
YOU CLICK!**



**BE ALERT TO
MALICIOUS PHISHING
EMAILS**



**Report suspicious email activity to PJM.
Call (610) 666-2244 or email it_ops_ctr_shift@pjm.com**