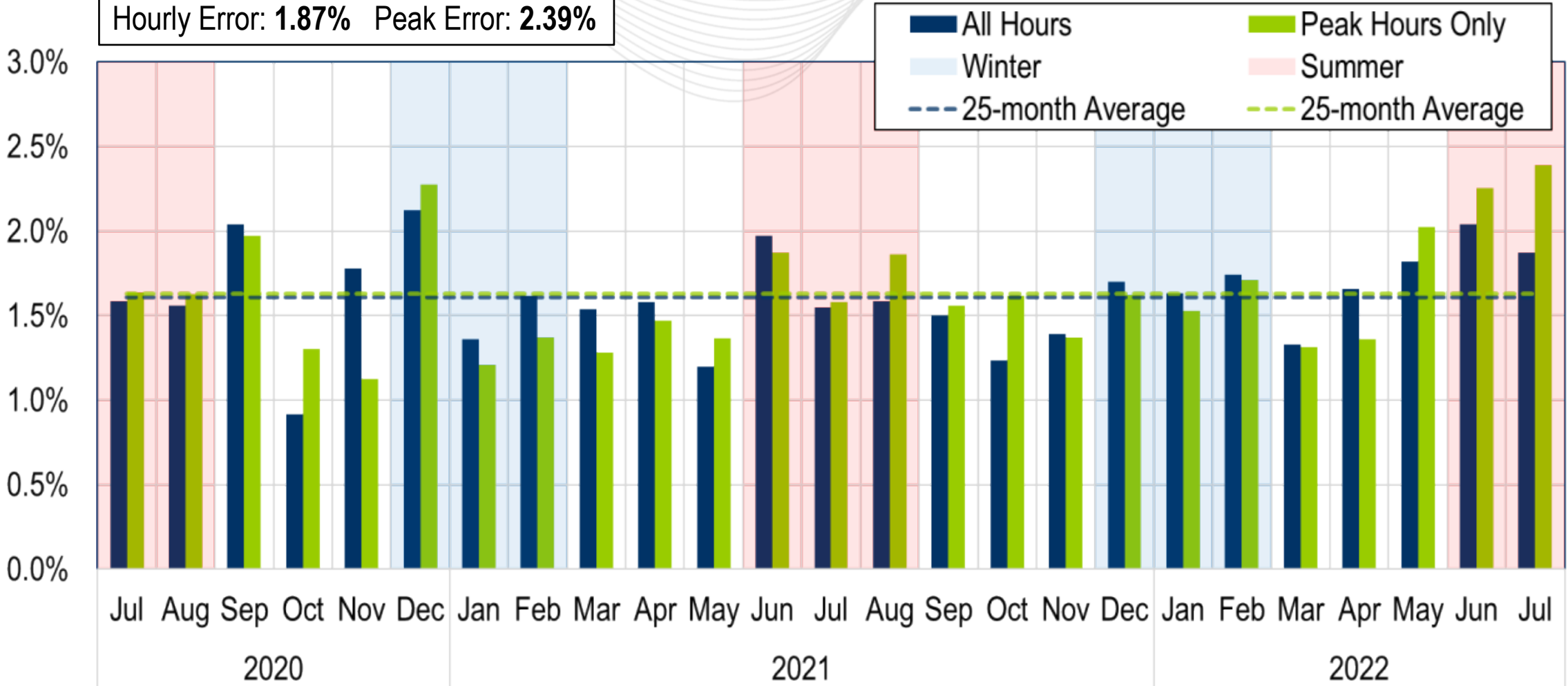




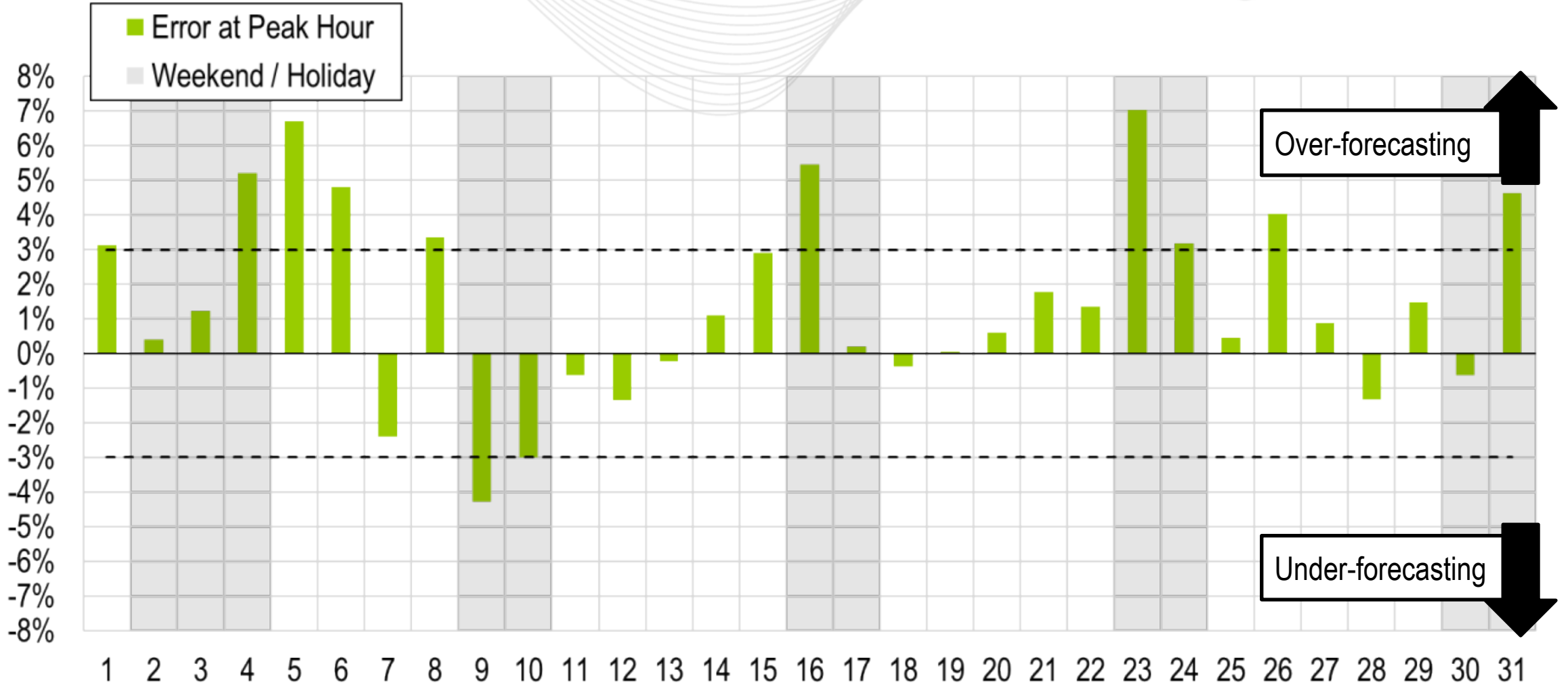
System Operations Report

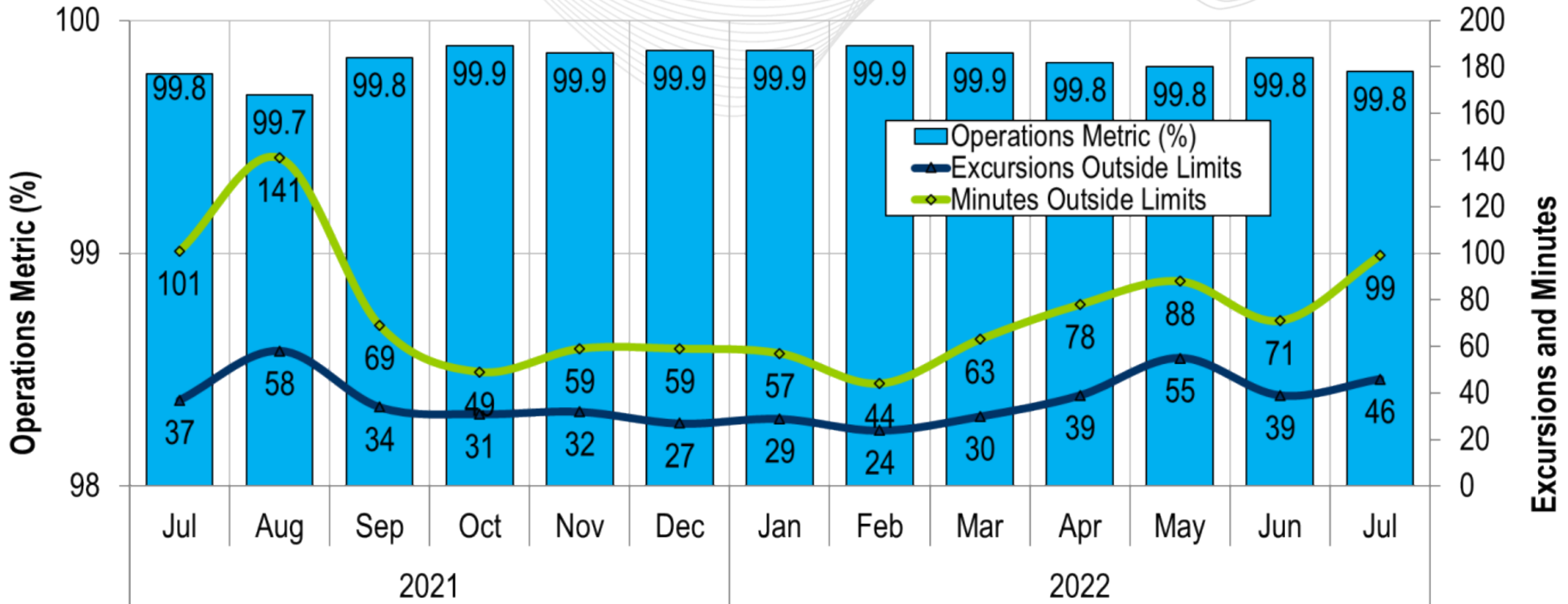
Hong Chen
Principal Engineer, Markets Coordination
Operating Committee
August 11th, 2022

July 2022
 Hourly Error: **1.87%** Peak Error: **2.39%**



Daily Peak Forecast Error (July)

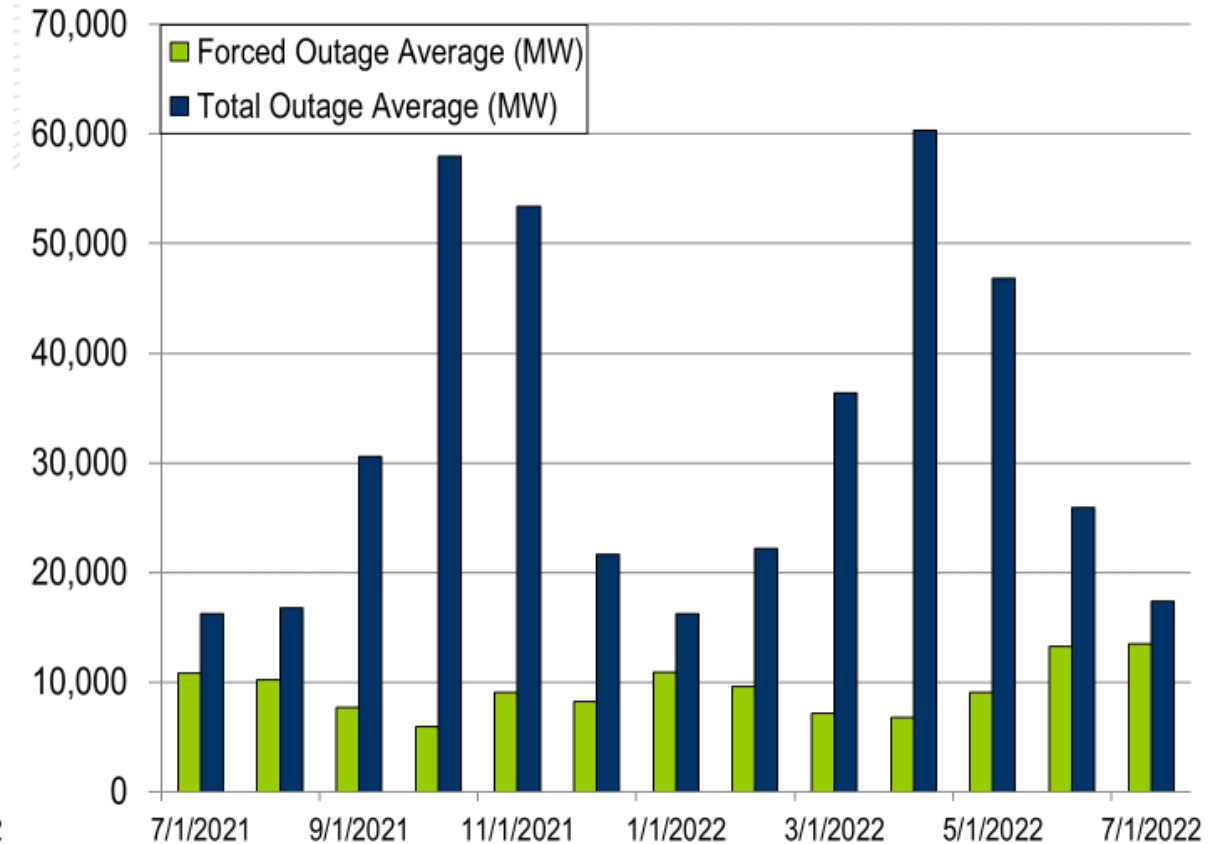
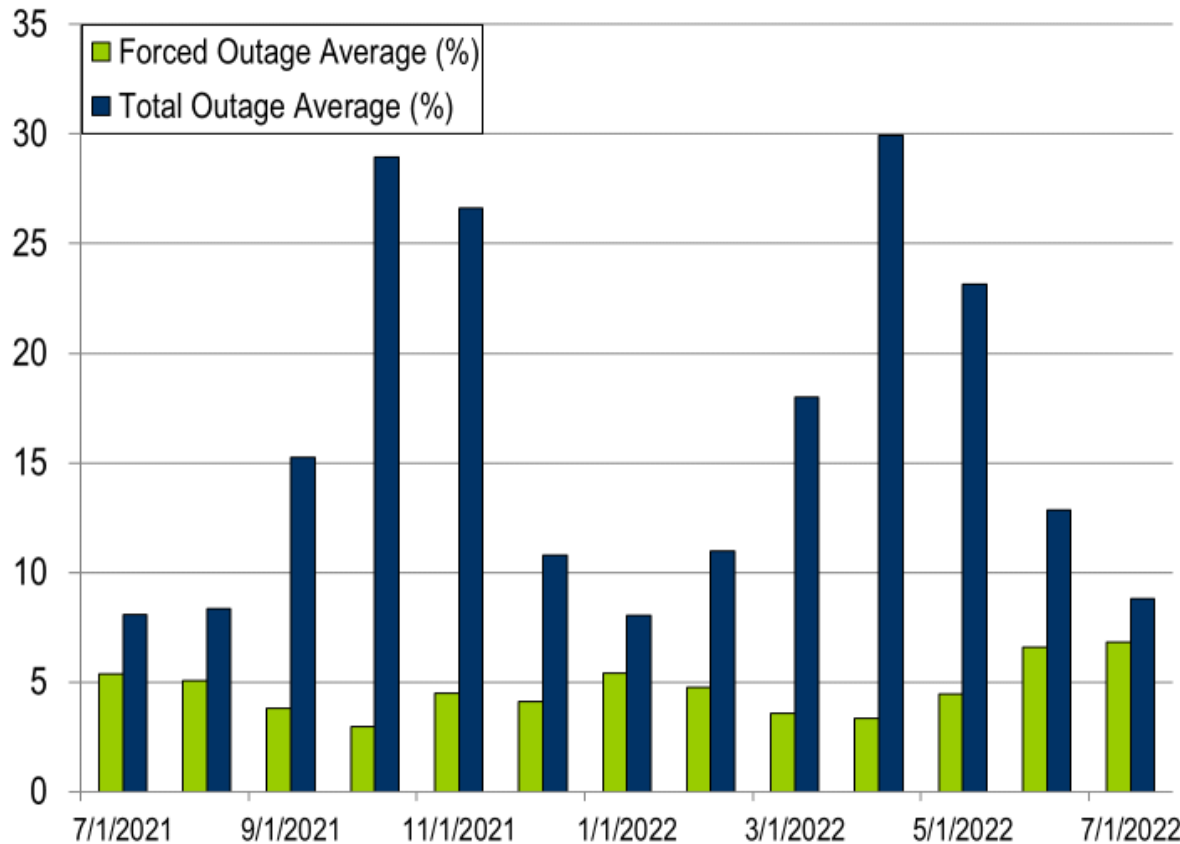




PJM's BAAL performance has exceeded the goal of 99% for each month in 2022.

- One spinning event
- Five reserve sharing events with the Northeast Power Coordinating Council (NPCC)
- The following Emergency Procedures occurred:
 - 20 Post-Contingency Local Load Relief Warnings (PCLLRW)
 - 10 Hot Weather Alerts

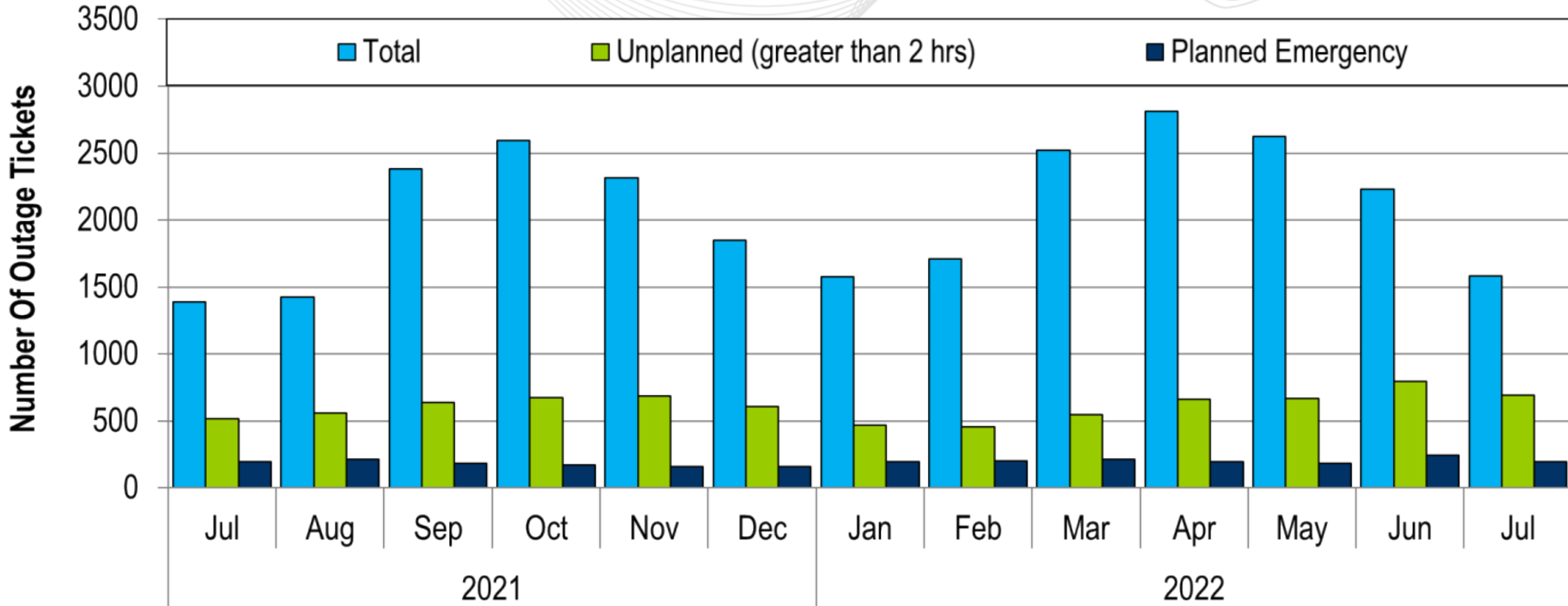
- 1 Shortage Case Approved
- The approved Shortage Case occurred on:
 - 07/28/22:
 - 1 Shortage Case for 16:10 interval
 - Load coming in higher than expected



The 13-month average forced outage rate is 4.68% or 9,398 MW.

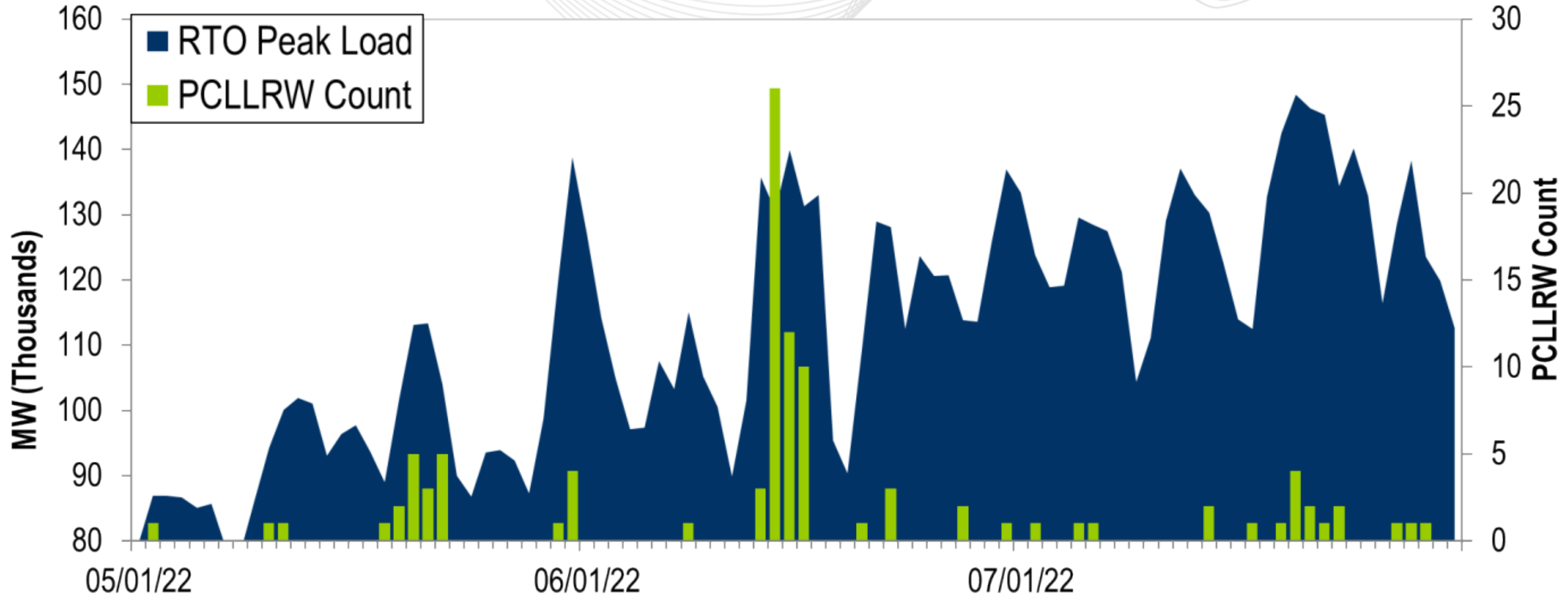
The 13-month average total outage rate is 16.13% or 32,429 MW.

2021-2022 Planned Emergency, Unplanned, and Total Outages by Ticket



Note: "Unplanned Outages" include tripped facilities. One tripping event may involve multiple facilities.

PCLLRW Count Vs. Peak Load – Daily Values For 3 Months



Event	Date	Start Time	End Time	Duration	Region	Tier 1 Estimate (MW)	Tier 1 Response (MW)
1	07/07/22	17:21:41	17:29:33	00:07:52	RTO	805.8	522.0

Event	Date	Start Time	End Time	Duration	Region	Tier 2 Assigned (MW)	Tier 2 Response (MW)	Tier 2 Penalty (MW)
1	07/07/22	17:21:41	17:29:33	00:07:52	RTO	952.2	952.2	0.0

*Tier 2 Response is equal to Tier 2 Assigned for events with duration less than ten minutes

Presenter:
Stephanie Schwarz,
Stephanie.Schwarz@pjm.com

SME:
Ross Kelly,
Ross.Kelly@pjm.com

System Operations Report



Member Hotline

(610) 666 – 8980

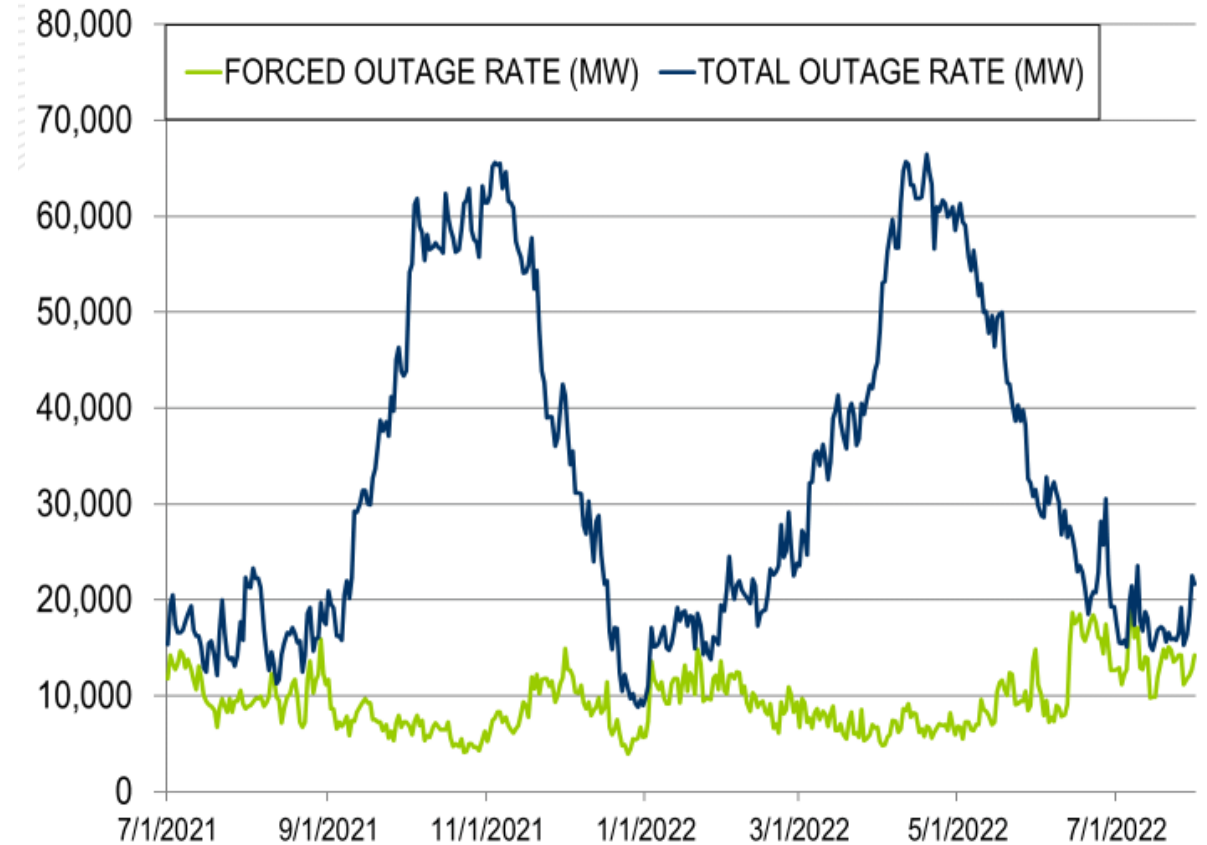
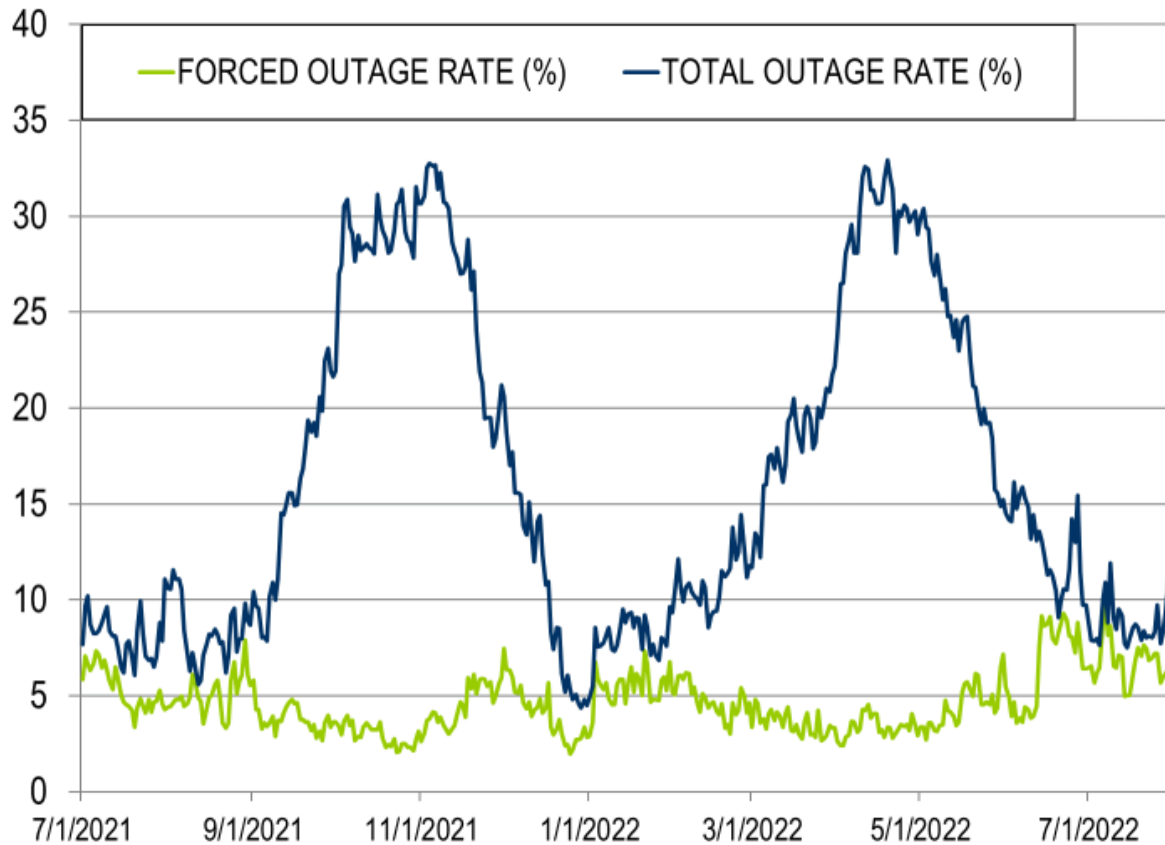
(866) 400 – 8980

custsvc@pjm.com

Appendix

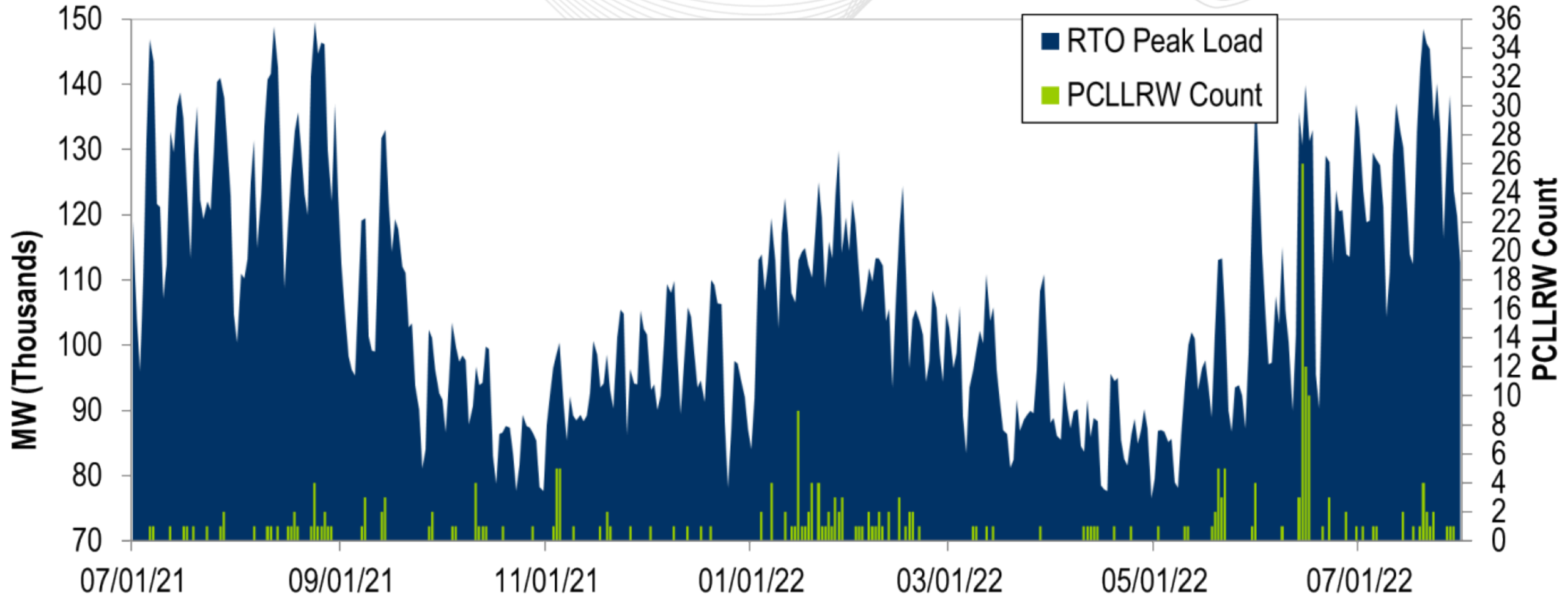
Goal Measurement: Balancing Authority ACE Limit (BAAL)

- The purpose of the new BAAL standard is to maintain interconnection frequency within a predefined frequency profile under all conditions (normal and abnormal), to prevent frequency-related instability, unplanned tripping of load or generation, or uncontrolled separation or cascading outages that adversely impact the reliability of the interconnection. NERC requires each balancing authority demonstrate real-time monitoring of ACE and interconnection frequency against associated limits and shall balance its resources and demands in real time so that its Reporting ACE does not exceed the BAAL ($BAAL_{LOW}$ or $BAAL_{HIGH}$) for a continuous time period greater than 30 minutes for each event.
- PJM directly measures the total number of BAAL excursions in minutes compared to the total number of minutes within a month. PJM has set a target value for this performance goal at 99% on a daily and monthly basis. In addition, current NERC rules limit the recovery period to no more than 30 minutes for a single event.



The 13-month average forced outage rate is 4.68% or 9,398 MW.
 The 13-month average total outage rate is 16.13% or 32,429 MW.

PCLLRW Count Vs. Peak Load – Daily Values For 13 Months



**PROTECT THE
POWER GRID
THINK BEFORE
YOU CLICK!**



Be alert to
malicious
phishing emails.

Report suspicious email activity to PJM.
(610) 666-2244 / it_ops_ctr_shift@pjm.com

