



FERC Grid Expansion Rule Order 1920

Paul McGlynn, Vice President – Planning

Jessica Lynch, Associate General Counsel

Markets and Reliability Committee

May 22, 2024

The Order requires transmission providers to:

<p>Engage in regional long-term transmission planning to identify transmission needs.</p>	<p>Develop processes and criteria for selecting transmission facilities to resolve those needs.</p>	<p>Devise and file ex ante cost allocation methods to apportion the cost of the facilities.</p>
-------------------------------------------------------------------------------------------	-----------------------------------------------------------------------------------------------------	-------------------------------------------------------------------------------------------------

Transmission providers must develop at least three distinct long-term scenarios that utilize a planning horizon of not less than 20 years.

Long-term scenarios must be reviewed and updated at least once every five years.

Transmission providers must incorporate the following seven factors when creating long-term scenarios:

<p>1 Federal, state and local laws and regulations affecting resource mix and demand</p>	<p>2 Federal, state and local laws on decarbonization and electrification</p>	<p>3 State-approved integrated resource plans</p>	
<p>4 Trends in fuel costs, performance and availability of generation</p>	<p>5 Resource retirements</p>	<p>6 Generator interconnection requests and withdrawals</p>	<p>7 Utility and corporate commitments</p>

- Each long-term scenario must incorporate the first three factors, but the order gives some latitude on how to weight or account for the remaining four.
- Each scenario must include a sensitivity to account for “uncertain operational outcomes” during events such as sustained outages due to extreme weather.

<p>Requires seven benefits be used to evaluate long-term regional transmission facilities</p>	<p>Transmission providers must develop criteria for selecting the most efficient and cost-effective solutions.</p>
	<p>The rule requires transmission providers evaluate transmission facilities that will address interconnection-related transmission needs.</p>
<p>Requirement to consider advanced conductors, power flow control devices, dynamic line ratings and switching for both new and existing facilities</p>	<p>Interregional Coordination</p>
<p>Requirements for local planning and “right sizing” replacement transmission facilities</p>	

 **Finish reading the Order.**

10
months

Regional Compliance Filing

Due 10 months from the effective date of the Final Rule

 **Determine timing and approach for engaging with stakeholders on our compliance.**

12
months

Interregional Compliance Filing

Due 12 months from the effective date of the Final Rule

June
PC

Additional Discussion at June PC

Pending LTRTP manual language

Chair:

Lisa Drauschak, Lisa.Drauschak@pjm.com

Secretary:

Dave Anders, david.anders@pjm.com

SME/Presenter:

Paul McGlynn, Paul.McGlynn@pjm.com

SME/Presenter:

Jessica Lynch, Jessica.Lynch@pjm.com



Member Hotline

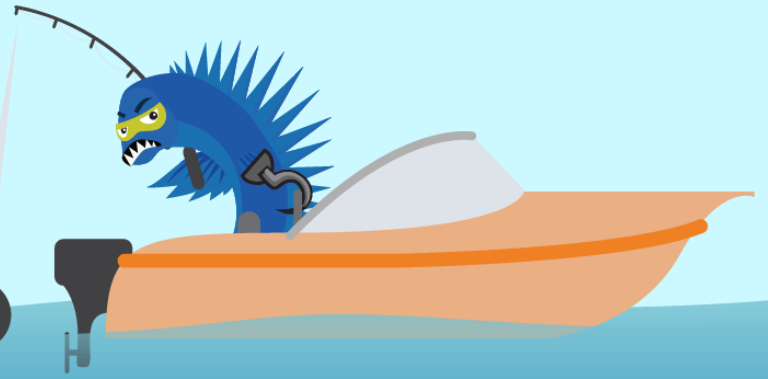
(610) 666-8980

(866) 400-8980

custsvc@pjm.com

**PROTECT THE
POWER GRID**

**THINK BEFORE
YOU CLICK!**



**BE ALERT TO
MALICIOUS PHISHING
EMAILS**



**Report suspicious email activity to PJM.
Call (610) 666-2244 or email it_ops_ctr_shift@pjm.com**