



System Operations Report

Marcus Smith, Lead Engineer –
Markets Coordination

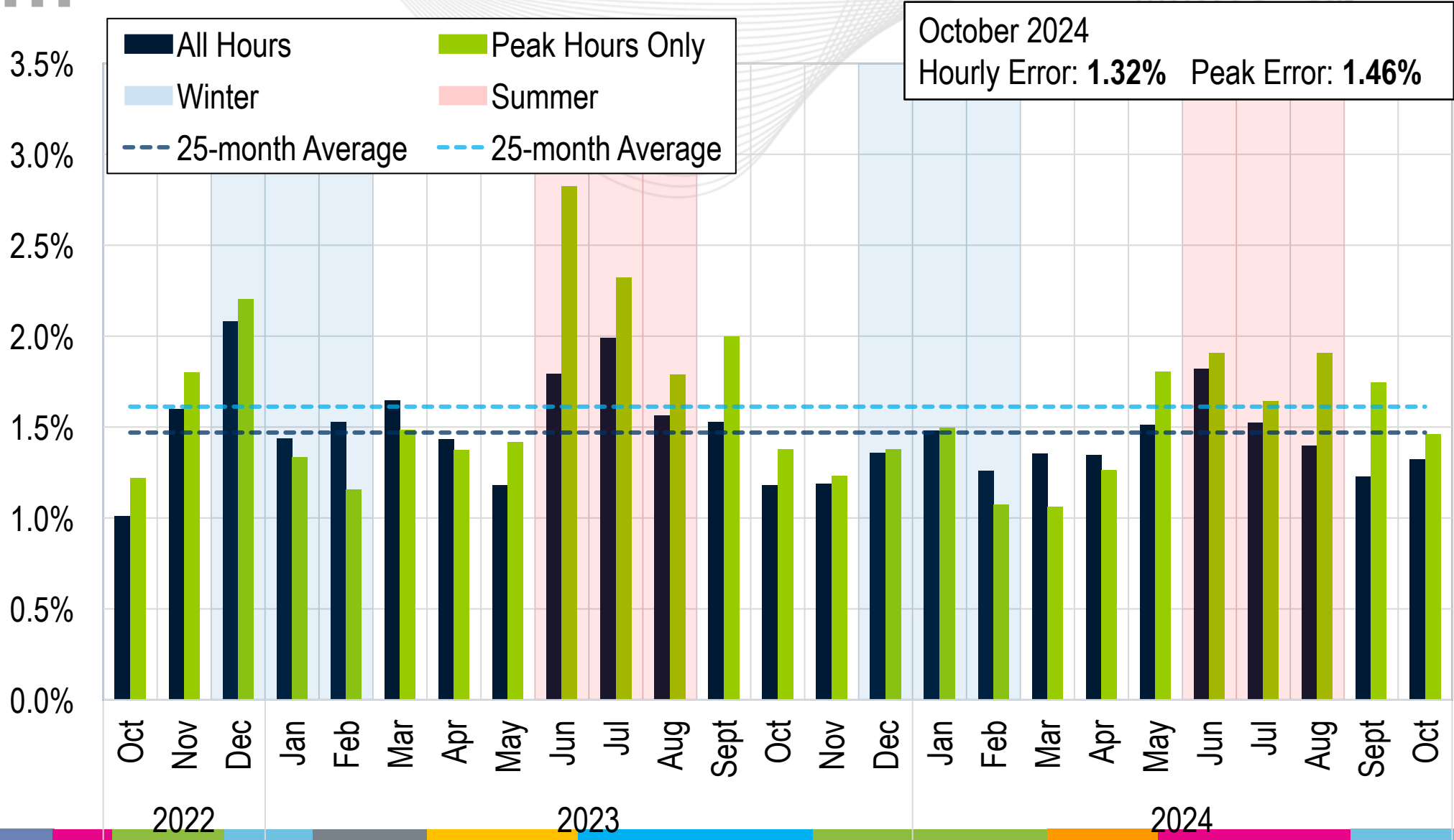
Jennifer Freeman, Lead Economist –
Performance Compliance

Operating Committee

November 8, 2024

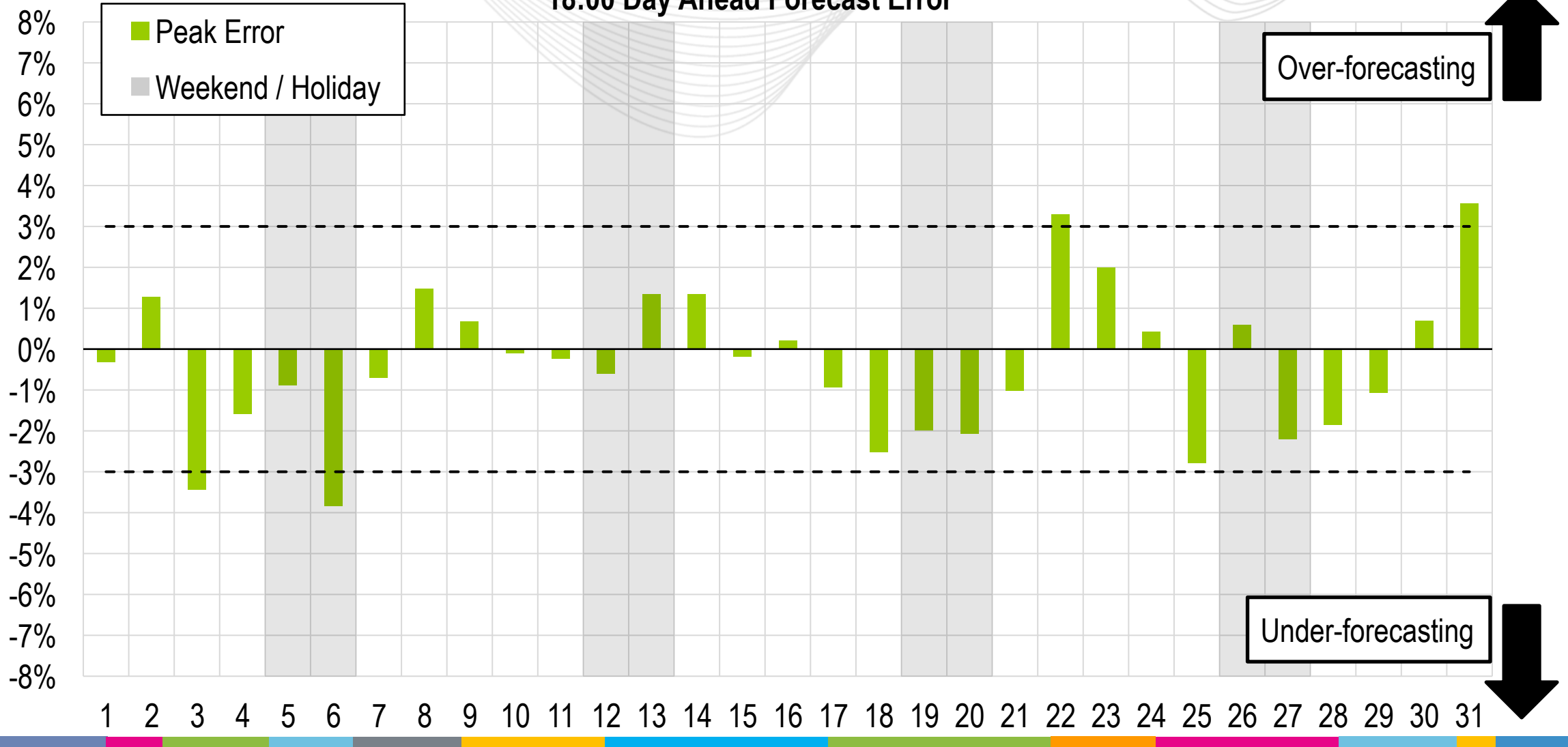


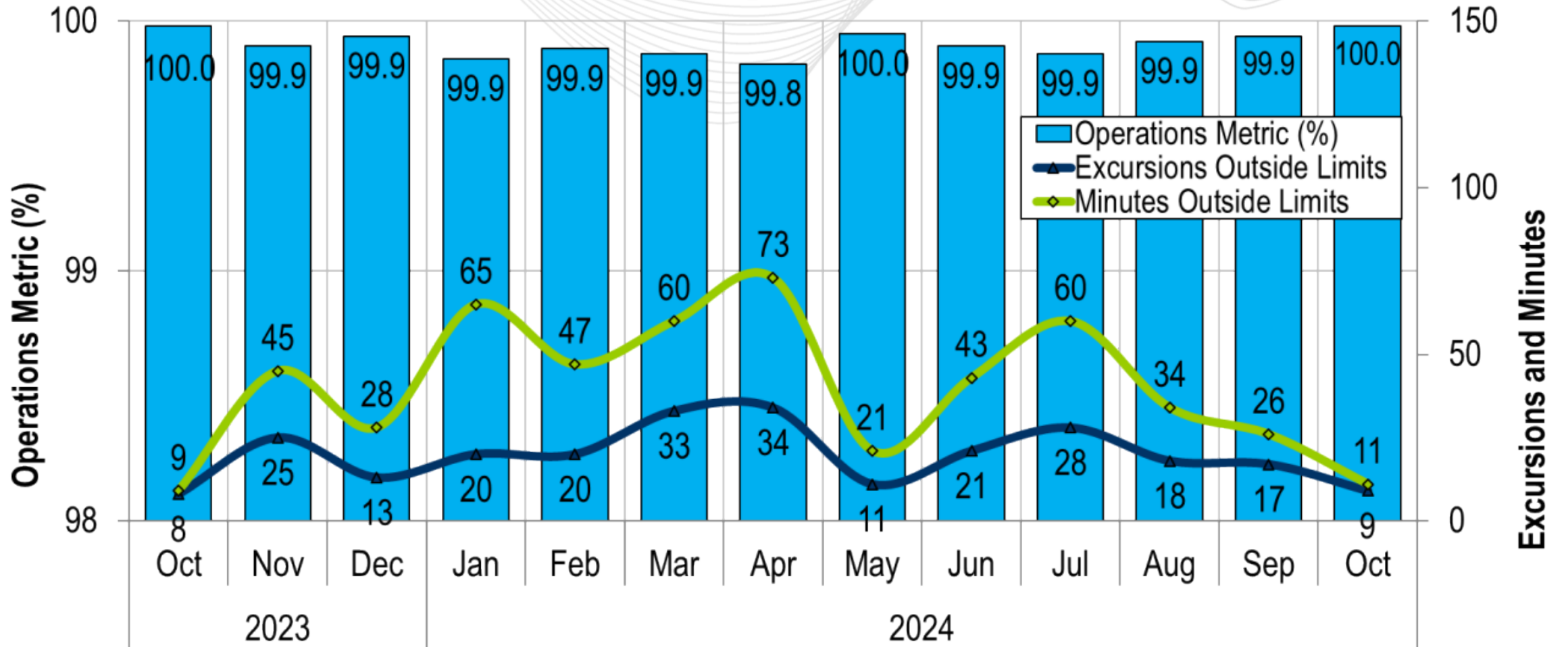
Average Load Forecast Error



Daily Peak Forecast Error (October)

18:00 Day Ahead Forecast Error

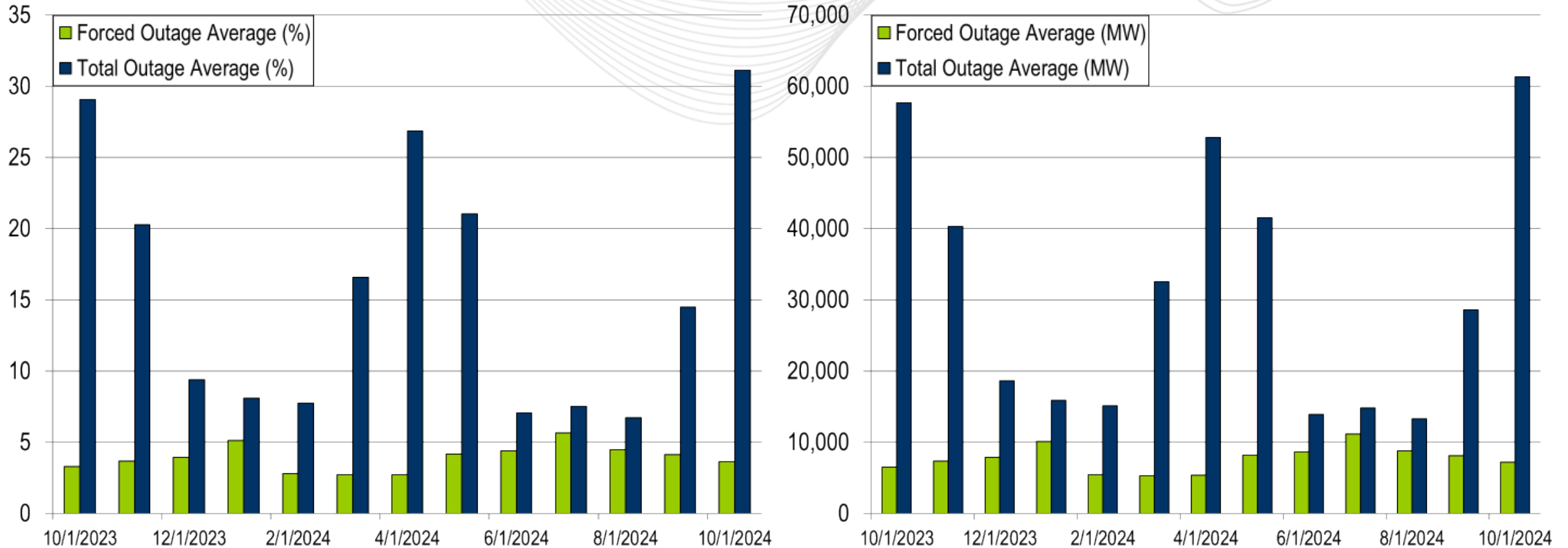




PJM's BAAL performance has exceeded the goal of 99% for each month in 2023 and 2024.

- The following Emergency Procedures occurred:
 - 1 Spin Event
 - 1 Shared Reserve event
 - 2 High System Voltage Action
 - 2 Geomagnetic Disturbance Warnings
 - 1 Geomagnetic Disturbance Action
 - 16 Post Contingency Local Load Relief Warnings (PCLLRWs)

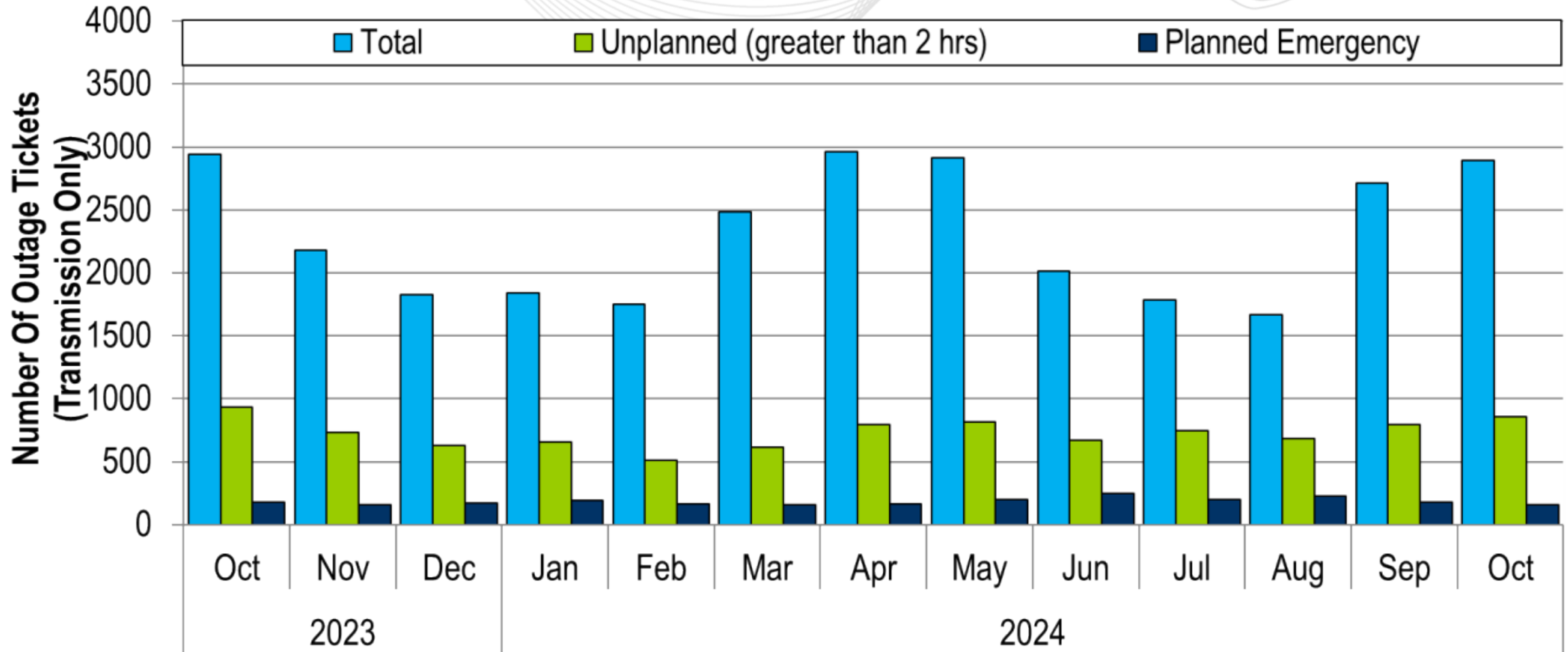
- 2 Shortage Cases Approved
- The approved Shortage Cases occurred on:
 - 10/15/2024:
 - 2 shortage cases approved for the 18:50 and 18:55 intervals
 - Factors: Increase in Load



The 13-month average forced outage rate is 3.92% or 7,736 MW.
 The 13-month average total outage rate is 15.87% or 31,303 MW.

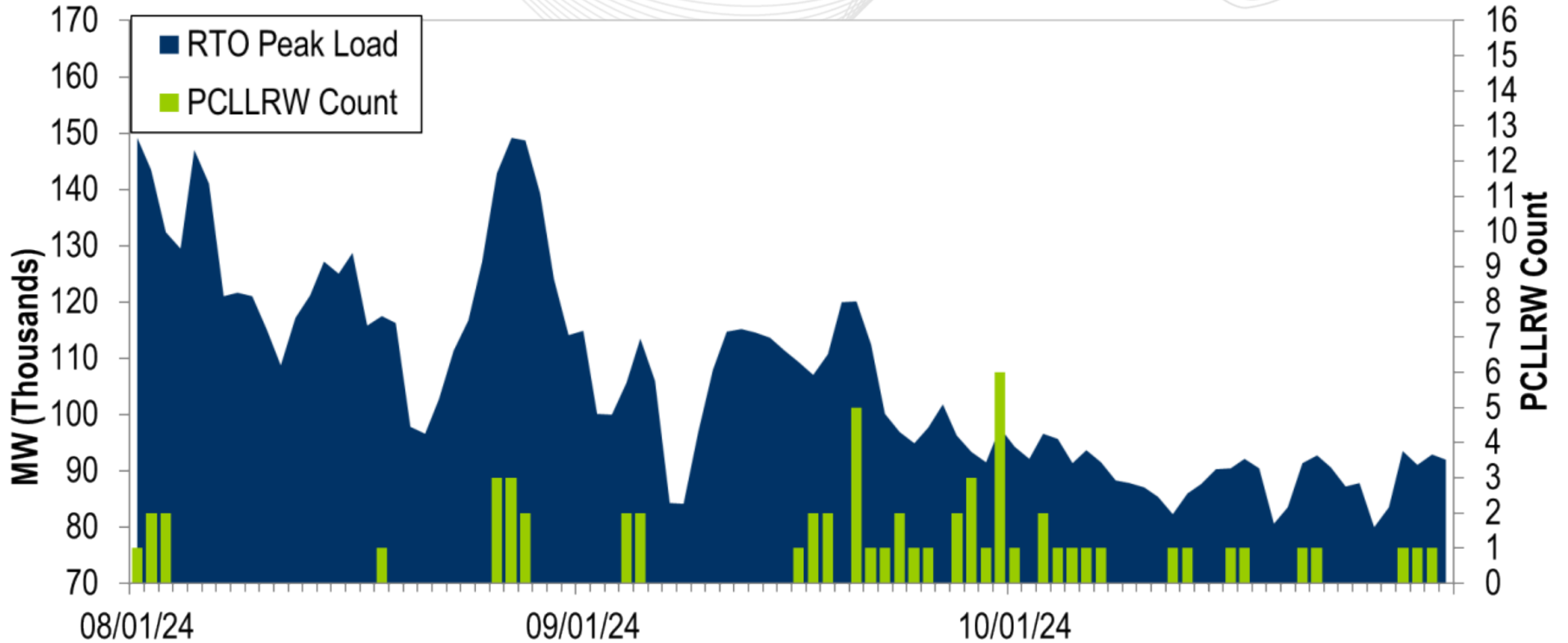


2023-2024 Planned Emergency, Unplanned, and Total Outages by Ticket (Transmission Only)



Note: "Unplanned Outages" include tripped facilities. One tripping event may involve multiple facilities.

PCLLRW Count Vs. Peak Load – Daily Values For 3 Months



Event	1		
Date	10/22/24		
Start Time	10:02:33		
End Time	10:08:44		
Duration	00:06:11		
Region	RTO		
Resource Type	Gen	DR	Total
Assigned (MW)	1581	205	1786
Estimated Expected Response of Assigned Resources (MW)	978	126	1104
Actual Response of Assigned Resources (MW)	933	191	1124
Output Increase of Resources without Assignment (MW)	1273	0	1273
Percent Response To Estimated Expected Response (%)	95%	151%	102%
Penalty (MW)	0	0	0

Load Forecast Report

Presenter/SME:

Marcus Smith,
Marcus.Smith@pjm.com

System Operations Report

Presenter:

Jennifer Freeman,
Jennifer.Freeman@pjm.com

SME:

Ross Kelly,
Ross.Kelly@pjm.com



Member Hotline

(610) 666 – 8980

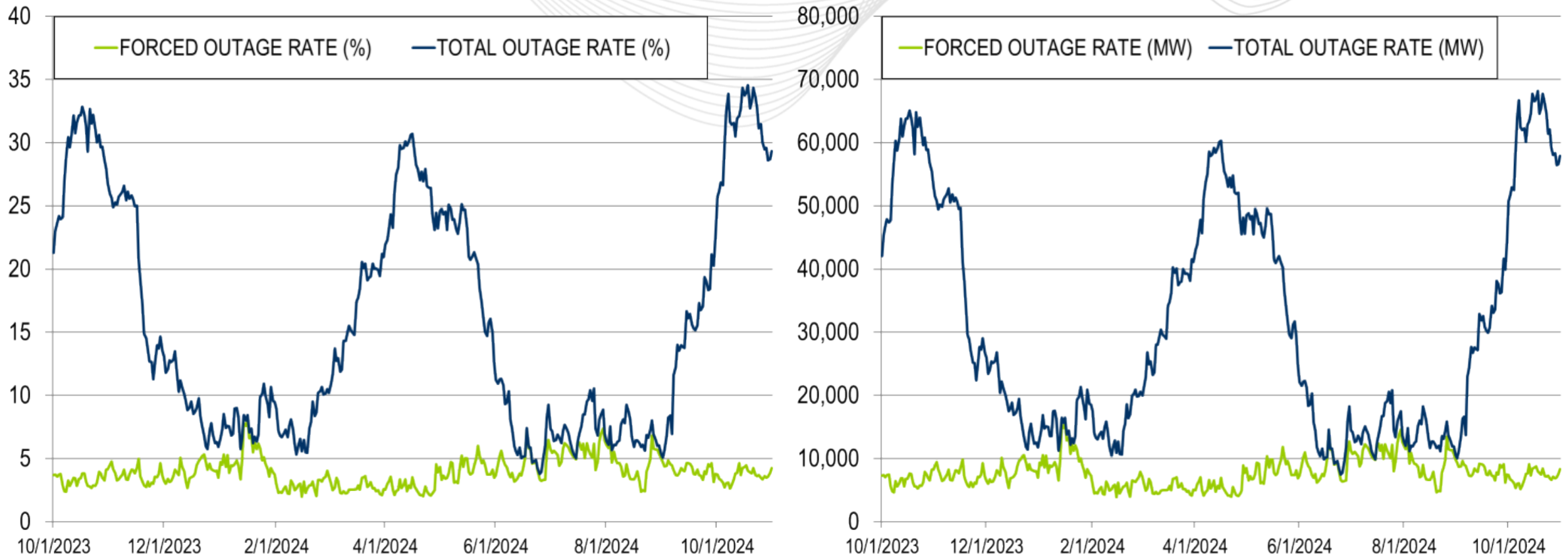
(866) 400 – 8980

custsvc@pjm.com

Appendix

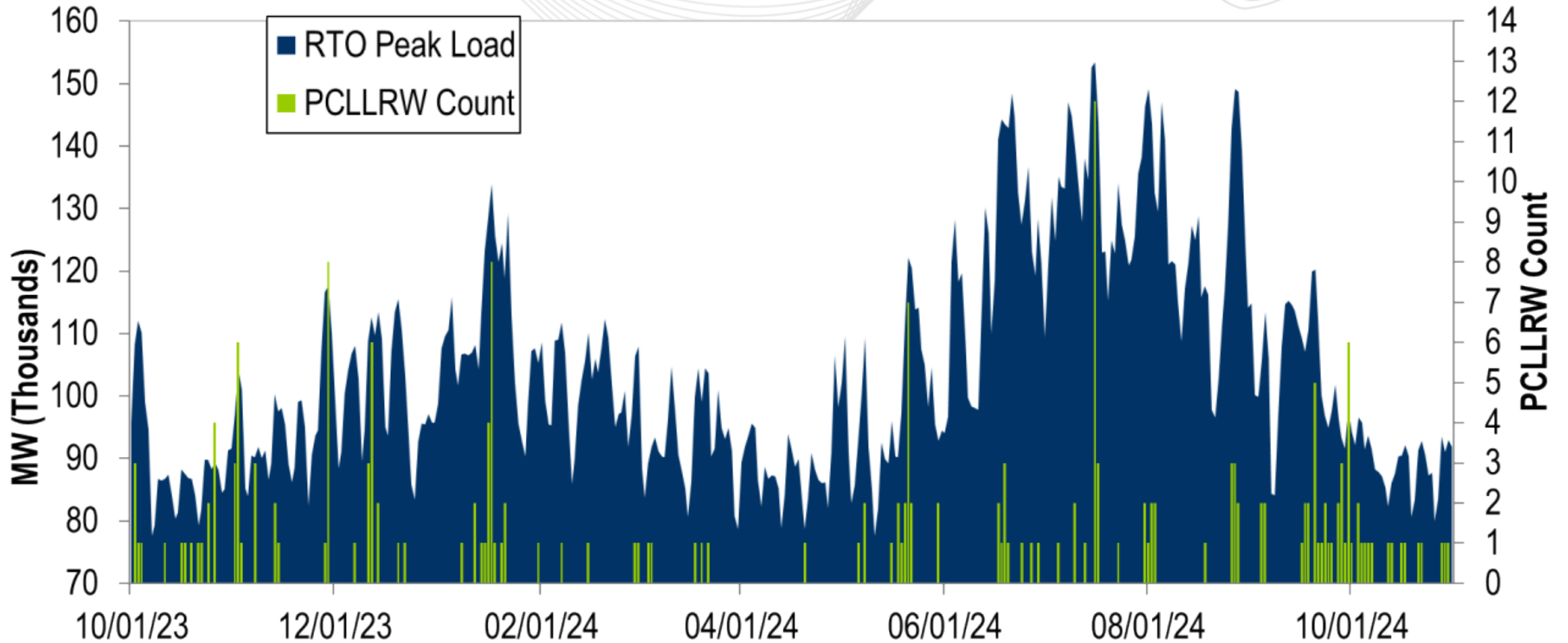
Goal Measurement: Balancing Authority ACE Limit (BAAL)

- The purpose of the new BAAL standard is to maintain interconnection frequency within a predefined frequency profile under all conditions (normal and abnormal), to prevent frequency-related instability, unplanned tripping of load or generation, or uncontrolled separation or cascading outages that adversely impact the reliability of the interconnection. NERC requires each balancing authority demonstrate real-time monitoring of ACE and interconnection frequency against associated limits and shall balance its resources and demands in real time so that its Reporting ACE does not exceed the BAAL ($BAAL_{LOW}$ or $BAAL_{HIGH}$) for a continuous time period greater than 30 minutes for each event.
- PJM directly measures the total number of BAAL excursions in minutes compared to the total number of minutes within a month. PJM has set a target value for this performance goal at 99% on a daily and monthly basis. In addition, current NERC rules limit the recovery period to no more than 30 minutes for a single event.



The 13-month average forced outage rate is 3.92% or 7,736 MW.
 The 13-month average total outage rate is 15.87% or 31,303 MW.

PCLLRW Count Vs. Peak Load – Daily Values For 13 Months

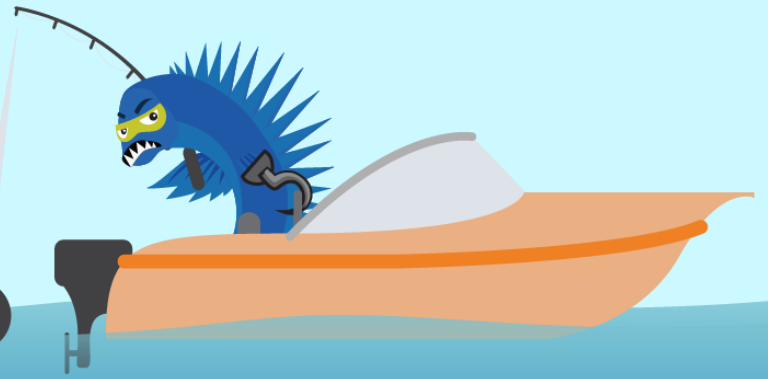


**PROTECT THE
POWER GRID**

**THINK BEFORE
YOU CLICK!**



**BE ALERT TO
MALICIOUS PHISHING
EMAILS**



**Report suspicious email activity to PJM.
Call (610) 666-2244 or email it_ops_ctr_shift@pjm.com**